

# **AKTIWEX**

## **PRODUCT CATALOGUE**

# **RISING VALUE**

**FOR**

**GENERATION**

# C O N T E N T S

ADHESIVE MORTARS

**100**

JOINT FILLERS

**200**

EXTERIOR COATING APPLICATIONS

**300**

ANCHORAGE AND REPAIR

**400**

WATERPROOFING

**500**

INDUSTRIAL SURFACE PLATING

**600**

CONCRETE AND MORTAR ADDITIVES

**700**

PAINT AND PRIMER

**800**



# ABOUT US

Aktiwex Constructions Chemicals was established in 2020 thanks to gained experience of Kerimoğulları Marble, Industry and Trade Company from 1993 until today and trading accumulations, together with experienced workmates and also the policy of zero waste project in marble production.

Our goal is; to bring the marble which seen as “waste” in our sector to economy with the our environmentalist and economical policy and make them valuable with recycling again.

Also our target is to take part among leading brands all over the world by producing product as marble strength in the construction sector.

## RISING VALUE

GENERATION

TO

GENERATION

# 1000

**ADHESIVE  
MORTARS**



101-C1  
Tile Adhesive-Type C1

<b>Product Description</b>	It is C1 class adhesive mortar which contains polymer modified fillers and is used for adhering tiles and ceramics on horizontal surfaces																																					
<b>Product No</b>	101																																					
<b>Places Of Usage</b>	It is used For adhering tiles, ceramics, tiles, granites, marbles, decorative bricks, glass mosaics, artificial and natural stones. In horizontal and vertical applications in the interior and exterior of buildings, In all kinds of ceramic coating materials with high absorbency, In wet areas such as bathrooms, kitchens, balconies, terraces, swimming pools, water reservoir.																																					
<b>Features and Advantages</b>	It is used in interior and exterior. It is easily prepared and applied, and the processing time is long. It can be applied safely on horizontal and vertical surfaces. After curing, it is resistant to water and frost. It is resistant to impacts and vibrations and shows high adhesion. It shows very good adhesion on different types of surfaces like concrete, cement mortars, stone, briquette																																					
<b>Technical Data</b>	<table border="0"> <tr> <td><b>Powder Cover</b></td> <td colspan="2">Gray and white</td> </tr> <tr> <td><b>Water Mixture Ratio</b></td> <td colspan="2">5,5- 6 l/ bag</td> </tr> <tr> <td><b>Packaging</b></td> <td colspan="2">25 kg kraft bag</td> </tr> <tr> <td><b>Intensity(fresh mortar)</b></td> <td colspan="2">1.5 kg/l (+20 °C temperature)</td> </tr> <tr> <td><b>Application Thickness</b></td> <td colspan="2">Min 3mm, Max 5mm</td> </tr> <tr> <td><b>Tensile Adhesion Strength</b></td> <td>Initial</td> <td>≥ 0.5N/mm<sup>2</sup></td> </tr> <tr> <td></td> <td>After Water Immersion</td> <td>≥ 0.5N/mm<sup>2</sup></td> </tr> <tr> <td></td> <td>After Heat Ageing</td> <td>≥ 0.5N/mm<sup>2</sup></td> </tr> <tr> <td></td> <td>After Freeze-thaw Cycles</td> <td>≥ 0.5N/mm<sup>2</sup></td> </tr> <tr> <td><b>Open Time</b></td> <td colspan="2">≥0.5N/mm<sup>2</sup> (20 min)</td> </tr> <tr> <td><b>Slip</b></td> <td colspan="2">≤0.5N/mm</td> </tr> <tr> <td><b>Surface and Ambient Temperature</b></td> <td colspan="2">+5°C/+35°C</td> </tr> </table>		<b>Powder Cover</b>	Gray and white		<b>Water Mixture Ratio</b>	5,5- 6 l/ bag		<b>Packaging</b>	25 kg kraft bag		<b>Intensity(fresh mortar)</b>	1.5 kg/l (+20 °C temperature)		<b>Application Thickness</b>	Min 3mm, Max 5mm		<b>Tensile Adhesion Strength</b>	Initial	≥ 0.5N/mm <sup>2</sup>		After Water Immersion	≥ 0.5N/mm <sup>2</sup>		After Heat Ageing	≥ 0.5N/mm <sup>2</sup>		After Freeze-thaw Cycles	≥ 0.5N/mm <sup>2</sup>	<b>Open Time</b>	≥0.5N/mm <sup>2</sup> (20 min)		<b>Slip</b>	≤0.5N/mm		<b>Surface and Ambient Temperature</b>	+5°C/+35°C	
<b>Powder Cover</b>	Gray and white																																					
<b>Water Mixture Ratio</b>	5,5- 6 l/ bag																																					
<b>Packaging</b>	25 kg kraft bag																																					
<b>Intensity(fresh mortar)</b>	1.5 kg/l (+20 °C temperature)																																					
<b>Application Thickness</b>	Min 3mm, Max 5mm																																					
<b>Tensile Adhesion Strength</b>	Initial	≥ 0.5N/mm <sup>2</sup>																																				
	After Water Immersion	≥ 0.5N/mm <sup>2</sup>																																				
	After Heat Ageing	≥ 0.5N/mm <sup>2</sup>																																				
	After Freeze-thaw Cycles	≥ 0.5N/mm <sup>2</sup>																																				
<b>Open Time</b>	≥0.5N/mm <sup>2</sup> (20 min)																																					
<b>Slip</b>	≤0.5N/mm																																					
<b>Surface and Ambient Temperature</b>	+5°C/+35°C																																					
<b>Technical Data</b>	<table border="0"> <tr> <td><b>Potlife</b></td> <td colspan="2">6 Hours</td> </tr> <tr> <td><b>Application Tool</b></td> <td colspan="2">Toothed comb suitable for the size of the coating</td> </tr> <tr> <td><b>Consumption</b></td> <td colspan="2">Consumption values vary depending on the condition of the surface, its roughness, the dimensions of the adhered material, and the placement technique (applied to only one or two surfaces of the adhesive).</td> </tr> <tr> <td><b>Storage</b></td> <td colspan="2">12 months in an unopened and dry environment. It complies with TS EN 12004-1 Standard.</td> </tr> </table>		<b>Potlife</b>	6 Hours		<b>Application Tool</b>	Toothed comb suitable for the size of the coating		<b>Consumption</b>	Consumption values vary depending on the condition of the surface, its roughness, the dimensions of the adhered material, and the placement technique (applied to only one or two surfaces of the adhesive).		<b>Storage</b>	12 months in an unopened and dry environment. It complies with TS EN 12004-1 Standard.																									
<b>Potlife</b>	6 Hours																																					
<b>Application Tool</b>	Toothed comb suitable for the size of the coating																																					
<b>Consumption</b>	Consumption values vary depending on the condition of the surface, its roughness, the dimensions of the adhered material, and the placement technique (applied to only one or two surfaces of the adhesive).																																					
<b>Storage</b>	12 months in an unopened and dry environment. It complies with TS EN 12004-1 Standard.																																					
<b>Application</b>	The material should be mixed with electric mixers for 3-4 minutes, rested for 5 minutes and then mixed again and used. Ceramics are adhered to the mortar which notched in 20 minutes under normal temperature and humidity conditions. The uncovered waiting time is approximately 20 minutes under normal temperature and humidity conditions. Depending on the environment conditions, the adhering time may be shorter. During adhering, the desired joint gap is left between the ceramics, and the mortar on the surface is pressed lightly to ensure full contact with the ceramic and the mortar is allowed to float in it. Mortar should be done after approximately 24 hours for wall applications and after approximately 48 hours for floor applications. It is recommended to use a suitable AKTIWEX JOINT FILLER in the joints.																																					





100	<b>Product Description</b>	It is an adhesive mortar which is S1 class flexible, high performance, cement- based, and used for adhering tile, ceramic and granite with reduced slip and long working time.																	
200	<b>Product No</b>	102																	
300	<b>Places of usage</b>	<ul style="list-style-type: none"> <li>It is used:</li> <li>In the application of coating materials such as ceramic, natural stone, travertine, decorative brick, granite, porcelain, ceramic, clinke, cotto on surfaces such as concrete, plaster, and screed horizontally and vertically in interior and exterior,</li> <li>In old ceramics, ceramic coating on granite,</li> <li>In ceramic applications on difficult surfaces such as plaster and paint,</li> <li>In places with wet volumes such as pools and water reservoir,</li> <li>In places where there are heat changes such as cold storages, freezing facilities, external fronts of ovens, underfloor heating systems,</li> <li>In terraces and balcony applications,</li> <li>In terraces and balcony applications,</li> <li>In places such as shopping - business centers, hospitals, schools, where there is heavy pedestrian and freight traffic.</li> </ul>																	
400	<b>Features and Advantages</b>	<ul style="list-style-type: none"> <li>It has high adhesion strength.</li> <li>It does not slip on the applications of vertical surfaces.</li> <li>It has long hours working time.</li> <li>It can be easily applied.</li> </ul>																	
500	<b>Technical Data</b>	<b>Technical Specifications</b> (23°C and 50% RH)																	
600		<table border="1"> <tr> <td rowspan="4"><b>Tensile Adhesion Strength</b> (TS EN 12004-2)</td> <td>Initial</td> <td>≥ 1.0N/mm<sup>2</sup></td> </tr> <tr> <td>After immersion in water</td> <td>≥ 1.0N/mm<sup>2</sup></td> </tr> <tr> <td>After heat ageing</td> <td>≥ 1.0N/mm<sup>2</sup></td> </tr> <tr> <td>After Freeze-Thaw Cycles</td> <td>≥ 1.0N/mm<sup>2</sup></td> </tr> <tr> <td></td> <td>Open Time</td> <td>(30 min.) ≥ 0.5N/mm<sup>2</sup></td> </tr> <tr> <td></td> <td>Deformability</td> <td>2.5 ≥ S1 ≤ 0,5mm</td> </tr> <tr> <td></td> <td>Slip</td> <td>0,5 mm</td> </tr> </table>	<b>Tensile Adhesion Strength</b> (TS EN 12004-2)	Initial	≥ 1.0N/mm <sup>2</sup>	After immersion in water	≥ 1.0N/mm <sup>2</sup>	After heat ageing	≥ 1.0N/mm <sup>2</sup>	After Freeze-Thaw Cycles	≥ 1.0N/mm <sup>2</sup>		Open Time	(30 min.) ≥ 0.5N/mm <sup>2</sup>		Deformability	2.5 ≥ S1 ≤ 0,5mm		Slip
<b>Tensile Adhesion Strength</b> (TS EN 12004-2)	Initial	≥ 1.0N/mm <sup>2</sup>																	
	After immersion in water	≥ 1.0N/mm <sup>2</sup>																	
	After heat ageing	≥ 1.0N/mm <sup>2</sup>																	
	After Freeze-Thaw Cycles	≥ 1.0N/mm <sup>2</sup>																	
	Open Time	(30 min.) ≥ 0.5N/mm <sup>2</sup>																	
	Deformability	2.5 ≥ S1 ≤ 0,5mm																	
	Slip	0,5 mm																	
700		<b>General Information</b> <b>Color</b> Gray and White Color Powder <b>Shelf Life</b> 12 Months depending unopened packaging and in dry environment <b>Packaging</b> 25 Kg Kraft bag																	
800		<b>Application Information</b> <b>Application Temperature</b> +5°C/+35°C <b>Mixing Ratio</b> 6.0 – 6.5 lt water / 25 Kg gray powder 6.0 – 6.5 lt water / 25 Kg white powder <b>Pot Life</b> 6 Hours <b>Commissioning Time</b> 8 hours on wall, 1 day on floor <b>Consumption Average</b> 3- 5 kg/m <sup>2</sup>																	
900	<b>Application</b>	Mixing should be made with a low speed mixer. Any additives not specified in the application instructions should not be added. The prepared mortar should be rested for 5-10 minutes to mature. It should be mixed again for 1-2 minutes before starting the application. Consumption is 3-5 kg / m <sup>2</sup> . The prepared mortar should be consumed within 6 hours. In order to obtain a better adhesion surface, after the mortar is spread on the surface with the flat part of the trowel, it should be applied with notched trowel in keeping with the size of tile. Combined adhesion management should be preferred in the application of 40X40 cm and larger sized coating materials, in applications to be made in places with heavy pedestrian-load traffic or in places with high temperature changes. The tiles must be adhered by applying force on the notched mortar within 30 minutes. In applications made under unsuitable ambient conditions such as high temperature, low humidity, and wind, the time may be shortened. Adhesion should not be made on the expired mortar, the mortar should be scraped from the surface.																	





<b>Product Description</b>	It is a granite, tiles and ceramic adhesive mortar which is C2T class, high performance, reduced slip, long working time and cement based.																																																
<b>Product No</b>	103																																																
<b>Places of usage</b>	<ul style="list-style-type: none"> <li>It is used: In the application of coating materials such as granite, large-sized ceramics, porcelain ceramics, cotto, clinker on surfaces such as concrete, plaster, screed horizontally and vertically in interior and exterior.</li> <li>In ceramic applications on old ceramics, marble,</li> <li>In places such as shopping-business centers, hospitals, schools where there is heavy pedestrian and freight traffic.</li> </ul>																																																
<b>Features and Advantages</b>	<ul style="list-style-type: none"> <li>It has high adhesion strength.</li> <li>It does not slip in vertical surface applications.</li> <li>It can be easily combed.</li> </ul>																																																
<b>Technical Data</b>	<table border="1"> <tr> <td><b>Tensile Adhesion Strength</b> (TS EN 12004 -2)</td> <td><b>Initial</b></td> <td>≥ 1.0N/mm<sup>2</sup></td> </tr> <tr> <td></td> <td><b>After immersion in Water</b></td> <td>≥ 1.0N/mm<sup>2</sup></td> </tr> <tr> <td></td> <td><b>After heat ageing</b></td> <td>≥ 1.0N/mm<sup>2</sup></td> </tr> <tr> <td></td> <td><b>After Freeze-Thaw Cycles</b></td> <td>≥ 1.0N/mm<sup>2</sup></td> </tr> <tr> <td></td> <td><b>Open Time (20 min.)</b></td> <td>≥ 1.0N/mm<sup>2</sup></td> </tr> <tr> <td></td> <td><b>Slip</b></td> <td>≤ 0.5/mm<sup>2</sup></td> </tr> <tr> <td><b>General Information</b></td> <td colspan="2">Conforms to TS EN 12004-1 Standard.</td> </tr> <tr> <td><b>Color</b></td> <td colspan="2">Gray and White Color Powder</td> </tr> <tr> <td><b>Shelf Life</b></td> <td colspan="2">12 Months depending unopened packaging and in dry environment.</td> </tr> <tr> <td><b>Packaging</b></td> <td colspan="2">25 Kg Kraft bag</td> </tr> <tr> <td><b>Application Information</b></td> <td colspan="2"></td> </tr> <tr> <td><b>Application Temperature</b></td> <td colspan="2">(+5°C) - (+35°C)</td> </tr> <tr> <td><b>Mixing Ratio</b></td> <td colspan="2">6.0 – 6.5 lt water / 25 Kg gray powder 6.0 – 6.5 lt water / 25 Kg white powder</td> </tr> <tr> <td><b>Pot Life</b></td> <td colspan="2">6 Hours</td> </tr> <tr> <td><b>Commissioning Time</b></td> <td colspan="2">Time 8 Hours on Wall / 1 Day on Floor</td> </tr> <tr> <td><b>Consumption Average</b></td> <td colspan="2">3-5 kg/m<sup>2</sup></td> </tr> </table>	<b>Tensile Adhesion Strength</b> (TS EN 12004 -2)	<b>Initial</b>	≥ 1.0N/mm <sup>2</sup>		<b>After immersion in Water</b>	≥ 1.0N/mm <sup>2</sup>		<b>After heat ageing</b>	≥ 1.0N/mm <sup>2</sup>		<b>After Freeze-Thaw Cycles</b>	≥ 1.0N/mm <sup>2</sup>		<b>Open Time (20 min.)</b>	≥ 1.0N/mm <sup>2</sup>		<b>Slip</b>	≤ 0.5/mm <sup>2</sup>	<b>General Information</b>	Conforms to TS EN 12004-1 Standard.		<b>Color</b>	Gray and White Color Powder		<b>Shelf Life</b>	12 Months depending unopened packaging and in dry environment.		<b>Packaging</b>	25 Kg Kraft bag		<b>Application Information</b>			<b>Application Temperature</b>	(+5°C) - (+35°C)		<b>Mixing Ratio</b>	6.0 – 6.5 lt water / 25 Kg gray powder 6.0 – 6.5 lt water / 25 Kg white powder		<b>Pot Life</b>	6 Hours		<b>Commissioning Time</b>	Time 8 Hours on Wall / 1 Day on Floor		<b>Consumption Average</b>	3-5 kg/m <sup>2</sup>	
<b>Tensile Adhesion Strength</b> (TS EN 12004 -2)	<b>Initial</b>	≥ 1.0N/mm <sup>2</sup>																																															
	<b>After immersion in Water</b>	≥ 1.0N/mm <sup>2</sup>																																															
	<b>After heat ageing</b>	≥ 1.0N/mm <sup>2</sup>																																															
	<b>After Freeze-Thaw Cycles</b>	≥ 1.0N/mm <sup>2</sup>																																															
	<b>Open Time (20 min.)</b>	≥ 1.0N/mm <sup>2</sup>																																															
	<b>Slip</b>	≤ 0.5/mm <sup>2</sup>																																															
<b>General Information</b>	Conforms to TS EN 12004-1 Standard.																																																
<b>Color</b>	Gray and White Color Powder																																																
<b>Shelf Life</b>	12 Months depending unopened packaging and in dry environment.																																																
<b>Packaging</b>	25 Kg Kraft bag																																																
<b>Application Information</b>																																																	
<b>Application Temperature</b>	(+5°C) - (+35°C)																																																
<b>Mixing Ratio</b>	6.0 – 6.5 lt water / 25 Kg gray powder 6.0 – 6.5 lt water / 25 Kg white powder																																																
<b>Pot Life</b>	6 Hours																																																
<b>Commissioning Time</b>	Time 8 Hours on Wall / 1 Day on Floor																																																
<b>Consumption Average</b>	3-5 kg/m <sup>2</sup>																																																
<b>Application</b>	<p>The material should be mixed with electric mixers for 3-4 minutes, rested for 5 minutes and then mixed again and used. The prepared mortar should be consumed within 4 hours. In order to obtain a better adhesion surface, after the mortar is spread on the surface by using the flat part of the trowel, it should be applied with notched trowel in keeping with the size of tile. Combined adhesive method should be preferred in the application of 40X40 cm and larger sized coating materials, in applications to be made in places with heavy pedestrian - load traffic. The tiles should be adhered by applying force on the notched mortar withn 30 minutes. This period may be shortened in applications made under unsuitable ambient conditions such as high temperature, low humidity, and wind. Adhesion should not be made on the expired mortar, the mortar should be scraped from the surface.</p>																																																





100	<b>Product Description</b>	It is used for construction elements which have high water absorption such as gas, concrete and brick.
	<b>Product No</b>	104
	<b>Places of usage</b>	It is used for building elements with high water absorption such as gas concrete and brick.
	<b>Features and Advantages</b>	<ul style="list-style-type: none"> <li>• It has high adhesion strength.</li> <li>• It can be easily applied.</li> <li>• It achieves saving time and working.</li> </ul>
	<b>Technical Data</b>	<p><b>Technical Specifications</b></p> <p>Compressive Strength M5 Chloride Content &lt; 0.1 % Largest Grain Size 1 mm Processing time &gt; 5 hours (TS EN 1015-9) Fixability Time &gt; 60 minutes (TS EN 1015-9) It complies with TS EN 998-2 Standard. Mixture rate 5,5 lt water/ 25 kg Kraft bag</p> <p><b>General Information</b></p> <p><b>Shelf Life</b> 12 months depending unopened packaging and dry environment. <b>Packaging</b> 25 Kg Kraft bag</p> <p><b>Application Information</b></p> <p><b>Application Temperature</b> (+5°C) - (+35°C)</p>
	<b>Application</b>	The product should be mixed for 3-4 minutes with electric mixers. It should be rested for 5 minutes and then mixed again and used. The adhesive should be spread over the entire surface and applied in the same thickness by applying with a 10 x 10 x 10 mm trowel. While laying up bricks or gas concrete, it is taken care of leaving maximum 3mm wide joint gap in horizontally and vertically and paid attention to fill the joint gap completely with adhesive. Adhesion process needs to be completed in 10- 15 minutes on the notched mortar.







# 105 - C2TF

## Fast Setting Adhesive Mortar

<b>Product Description</b>	It is an adhesive mortar which is cement-based, quick setting, high performance and reduced slip.	
<b>Product No</b>	105	
<b>Places of usage</b>	<ul style="list-style-type: none"> <li>It is used: For adhering coating materials such as floor and wall ceramics, granite ceramics, natural stone on surfaces of concrete, plaster, screed in interior or exterior.</li> <li>For fast ceramic coating in places such as government buildings, cafes, supermarkets, airports, which are desired to be opened in one day.</li> <li>In ceramic coating applications on already existing ceramics.</li> </ul>	
<b>Features and Advantages</b>	<ul style="list-style-type: none"> <li>It gains strength after 6 hours due to its quick setting feature.</li> <li>It has high adhesion strength.</li> <li>It does not slip on vertical surface applications</li> <li>It can be easily applied.</li> </ul>	
<b>Technical Data</b>	<b>Technical Specifications</b> <b>Tensile Adhesion Strength (TS EN 12004-2)</b> <b>Initial</b> $\geq 1.0N/mm^2$ <b>After immersion in water</b> $\geq 1.0N/mm^2$ <b>After heat ageing</b> $\geq 1.0N/mm^2$ <b>After Freeze-Thaw Cycles</b> $\geq 1.0N/mm^2$ <b>Open Time (10 min.)</b> $\geq 0.5N/mm^2$ <b>Early Adhesion (6 hours)</b> $\geq 0.5N/mm^2$ <b>Slip</b> $\leq 0.5$ mm <b>General Information</b> <b>Color</b> Gray and White Color Powder <b>Shelf Life</b> 12 months depending unopened packaging and dry environment. <b>Packaging</b> 25 Kg Kraft bag <b>Application Information</b> <b>Application Temperature</b> $(+5\text{ C})^\circ - (+35\text{ C})^\circ$ <b>Mixing Ratio</b> 6,5-7 lt. water /25 Kg. Toz <b>Pot Life</b> 45 Minutes <b>Time To Open Light Pedestrian Traffic</b> 6 Hours <b>Consumption Average</b> 3-5 kg/m <sup>2</sup>	
<b>Application</b>	<p>25 Kg. 105 should be poured into 6.5-7.0 liters of water slowly and mixed until a homogeneous mixture is obtained. Mixing should be done with a low speed mixer. It should not be added any additives which does not state in the application instructions. The prepared mortar should be rested for 5-10 minutes to mature. It should be mixed again for 1-2 minutes before starting the application. Consumption is on average 3-5 kg/m<sup>2</sup>. The prepared mortar should be consumed within 45 minutes. In order to obtain a better adhesion surface, after the mortar is spread on the surface by using the flat part of the trowel, it should be applied with notched trowel in keeping with the size of tile. Combined adhering method should be preferred in the application of 40x40 cm and larger sized coating materials, in applications to be made in places with heavy pedestrian-load traffic. The tiles should be adhered by applying force on the notched mortar within 15 minutes. This period may be shortened in applications made under unsuitable ambient conditions such as high temperature, low humidity and wind. Due to the quick setting of the product, notching on mortar should be made as many areas as the adhering process can be completed within the open time waiting period. Adhesion should not be done on the expired mortar, the mortar should be scraped from the surface.</p>	





# 106 High Performance, Elastic, Ready-to-Use Ceramic Adhesive

100	<b>Product Description</b>	It is a ready-to-use ceramic adhesive which is acrylic emulsion base, and has high performance.
200	<b>Product No</b>	106
300	<b>Places of usage</b>	It is used for tiling wall with coating materials such as ceramic, tile, terracotta etc. in interior and exterior.
400	<b>Features and Advantages</b>	<ul style="list-style-type: none"> <li>Elastic,</li> <li>Ready to use,</li> <li>Its smell is not affected by humidity.</li> </ul>
500	<b>Technical Data</b>	<p><b>General Information</b></p> <p><b>Color:</b> White</p> <p><b>Joint Filling Time:</b> Min. 3 days</p> <p><b>Application Thickness:</b> Max. 3mm</p> <p><b>Slip:</b> None</p> <p><b>Uncovered Holding Duration:</b> 3 Days</p> <p><b>Wettability:</b> 90%</p> <p><b>Full Curing Time:</b> 28 Days</p> <p><b>Floor Temperature:</b> +10°C +25°C</p> <p><b>Consumption:</b> 1.7 kg/m for 1 mm thickness (<math>\leq 100 \text{ cm}^2</math> ceramic coatings)</p> <p><b>Packaging:</b> 5 and 20 kg plastic buckets.</p>
600	<b>Application</b>	<p>The surface must be clean, dry, smooth and solid, loose plaster, oil, paint, varnish etc. on the surface. should be cleaned and dust removed. Ambient temperature +5 C to +35 C. It should not be applied on surfaces that are frozen, melting or at risk of frost within 24 hours. It should not be applied under direct sun, strong wind or on hot surfaces. During the application, care should be taken not to form a film on the 106 surface. If a film is formed, that part should be combed again. 106 should be mixed well to facilitate spreading before use. The mortar should be applied to the surface and its thickness should be adjusted with a steel toothed trowel. The tooth size of the trowel should be determined according to the size of the ceramic to be laid and the smoothness of the surface to be applied. For ceramics of the following dimensions, mortar should be applied both on the surface to be applied and on the back of the ceramic. For a good adhesion, the air should be expelled by applying force with the help of a rubber hammer.</p>



100

200

300

400

500

600

700

800

900

1000

1100

1200

# 2000

**JOINT  
FILLERS**



<b>Product Description</b>	It is a CG1 class, cement-based, high performance, single component, easy-to-work, smooth surface joint filler used in 1-6 mm joints.
<b>Product No</b>	201
<b>Horizontal and vertical applications</b>	<ul style="list-style-type: none"> <li>• It is used for filling the joints of ceramics,</li> <li>• Tiles and similar coating materials up to 1-6 mm.</li> </ul>
<b>Advantages</b>	<ul style="list-style-type: none"> <li>• Does not cause color fading, dusting or cracking.</li> <li>• It provides a smooth surface.</li> <li>• Adheres well to ceramic edges</li> <li>• It offers rich color options and is decorative.</li> <li>• It is resistant to abrasion.</li> </ul>
<b>Preparation and Application</b>	<ul style="list-style-type: none"> <li>• Mixture: The product should be mixed with electric mixers for 3-4 minutes, rested for 5 minutes and then mixed again and used. The grout should be filled into the joints with a hard rubber tipped squeegee or a hard rubber based joint spreading trowel. In order to fill the gaps thoroughly, it should be drawn first parallel and then diagonally.</li> <li>• The excess of the mortar on the surface should be scraped off with a moistened soft-tipped spatula, after waiting for 15-30 minutes depending on the ambient temperature, it should be wiped with a damp sponge and the thin joint layer that may remain on the surface should be thoroughly cleaned.</li> <li>• Joint wiping should not be started prematurely. In order not to cause color fluctuations, it should not be wiped with a wet sponge more than necessary. The sponge used should be cleaned at frequent intervals.</li> <li>• It dries on the walls after 24 hours, can be walked on the floors after 48 hours, and can be opened to pedestrian traffic after 7 days.</li> </ul>
<b>Technical Specifications</b>	<p><b>Appearance:</b> White or colored fine powder</p> <p><b>Powder Density:</b> 1,10 kg/lit</p> <p><b>Water Mixture Density:</b> 6.0-6.5 L water/20 kg bag</p> <p><b>Rest Time:</b> 5-10 minutes</p> <p><b>Pot Life:</b> 1 hour</p> <p><b>Application Temperature:</b> between +5°C and +35°C</p> <p><b>Time to Use:</b> After 24 hours on wall, 48 hours on floor</p> <p><b>Elasticity:</b> Medium</p> <p><b>Flexural Strength:</b> <math>\geq 2.5</math> N/mm<sup>2</sup> (TS EN 12808-3)</p> <p><b>Compressive Strength:</b> <math>\geq 15</math> N/mm<sup>2</sup> (TS EN 12808-3)</p> <p><b>Abrasion Resistance:</b> <math>\leq 2000</math> mm<sup>3</sup> (TES EN 12808-2)</p> <p><b>Shrinkage:</b> 3 mm/m [TS EN 12808-4]</p> <p><b>Water Absorption:</b> 30 min <math>\leq</math> 5g (TS EN 12808-5) 240 min <math>\leq</math> 10 g (TS EN 12808-5)</p> <p>It complies with TS EN 13888 Standard.</p>





202 - CG2WA

Silicone Additive Antibacterial Joint Filler

<b>Product Description</b>	CG2WA class, cement-based, silicone-added, resistant to mold and fungus formation, high-performance, single-component, smooth surface, flexible, reduced water absorption, abrasion-resistant joint filler used in 1-8 mm joints.
<b>Product No</b>	202
<b>Places of Usage</b>	<ul style="list-style-type: none"> <li>• Indoor and outdoor,</li> <li>• Horizontal and vertical applications</li> <li>• Wet areas such as pools, bathrooms, toilets and easily polluted places such as kitchens.</li> <li>• In areas that are constantly exposed to water such as water tanks, Turkish baths and saunas and where mold growth is observed rapidly. In underfloor heating systems,</li> <li>• It is used for filling the joints up to 1-6 mm of coatings such as granite ceramics, large-sized ceramics, natural granite, marble, clinker and glass mosaic.</li> </ul>
<b>Advantages</b>	<ul style="list-style-type: none"> <li>• It does not cause color fading, dusting emission or cracking.</li> <li>• It is highly resistant to dirt formation.</li> <li>• Thanks to the silicone additive, it is water repellent and can be used safely in wet areas.</li> <li>• It is resistant against growth of mold and fungus.</li> <li>• It provides a smooth surface.</li> <li>• It is not affected by sudden temperature changes.</li> <li>• It is resistant to water and frost.</li> <li>• It can be used in underfloor heating systems.</li> <li>• It adheres perfectly to the ceramic edges without cracking.</li> <li>• It offers rich color options and is decorative.</li> <li>• It is resistant to abrasion.</li> </ul>
<b>Preparation and Application</b>	<p>Mixture: The product should be mixed with electric mixers for 3-4 minutes, let it rest for 5 minutes and then mixed again and used.</p> <ul style="list-style-type: none"> <li>• The joint filler should be filled into the joints with a hard rubber tipped squeegee or a hard rubber based joint spreading trowel. In order to fill the gaps thoroughly, it should be drawn first parallel and then crosswise.</li> <li>• The excess of the mortar on the surface should be scraped off with a wetted soft-tipped spatula, waited for 15-30 minutes depending on the ambient temperature, then wiped with a damp sponge, and the thin joint layer that may remain on the surface should be thoroughly cleaned.</li> <li>• It should not be started to process of joint removal untimely. In order not to cause color fluctuations, it should not be wiped with a wet sponge more than necessary. The sponge used should be cleaned at frequent intervals.</li> <li>• It dries on walls after 12 hours, can be walked on floors after 24 hours, can be opened to pedestrian traffic after 7 days.</li> </ul>
<b>Technical Specifications</b>	<p><b>Appearance</b> White or colored fine powder</p> <p><b>Powder Density</b> ~1,10 kg/lt</p> <p><b>Water Mixing Ratio</b> 6,0-6,5 L water/20 kg bag</p> <p><b>Rest Time</b> 5-10 minutes</p> <p><b>Pot Life</b> ~1 hour</p> <p><b>Application Temperature:</b> +5°C ve +35°C</p> <p><b>Use Time:</b> After 12 hours on Wall, 24 Hours on Floor</p> <p><b>Flexibility:</b> Good</p> <p><b>Flexural Strength</b> <math>\geq 2.5</math> N/mm<sup>2</sup> (TS EN 12808-3)</p> <p><b>Compressive Strength</b> <math>\geq 15</math> N/mm<sup>2</sup> (TS EN 12808-3)</p> <p><b>Abrasion Resistance</b> <math>\leq 1000</math> mm<sup>3</sup> (TES EN 12808-2)</p> <p><b>Shrinkage</b> 3 mm/m (TS EN 12808-4)</p> <p><b>Water Absorption</b> <math>\leq 2</math> g 240 <math>\leq 5</math> g (TS EN 12808-5)</p> <p>240 min <math>\leq 10</math> g (TS EN 12808-5)</p> <p><b>It complies with TS EN 13888 Standard.</b></p>



100

200

300

400

500

600

700

800

900

1000

1100

1200

Ceramic Dimensions (cm)	Joint Depth (mm)	Joint Width						
		1	2	3	4	5	6	10
		Consumption						
2,5x2,5	6	800	1600	2400	3200	4000	4750	7950
	8	1100	2100	3200	4250	5300	6350	10600
	10	1350	2650	4000	5300	6650	7950	13200
	12	1600	3200	4750	6350	7950	9500	15850
5x5	6	400	800	1200	1600	2000	2400	4000
	8	550	1110	1600	2100	2650	3200	5300
	10	700	1350	2000	2650	3300	4000	6600
	12	800	1600	2400	3200	4000	4750	7950
10x10	6	200	400	600	800	1000	1200	2000
	8	300	550	800	1100	1350	1600	2650
	10	350	700	1000	1350	1650	2000	3300
	12	400	800	1200	1600	2000	2400	4000
10x20	6	150	300	450	600	750	900	1500
	8	200	400	600	800	990	1200	2000
	10	250	500	750	1000	1250	1500	2500
	12	300	600	900	1200	1500	1800	3000
20x20	6	100	200	300	400	500	600	1000
	8	150	300	400	550	700	800	1350
	10	200	350	500	700	850	1000	1650
	12	200	400	600	800	1000	1200	2000
20x30	6	100	200	250	350	450	500	850
	8	150	250	350	450	550	700	1100
	10	150	300	450	550	700	850	1400
	12	200	350	500	700	850	1000	1650
20x50	6	100	150	250	300	350	450	700
	8	100	200	300	400	500	550	950
	10	150	250	350	500	600	700	1150
	12	150	300	450	550	700	850	1400
25x33	6	100	150	250	300	350	450	700
	8	100	200	300	400	500	600	950
	10	150	250	350	500	600	700	1200
	12	150	300	450	600	700	850	1400
25x40	6	100	150	200	250	350	400	650
	8	100	200	250	350	450	550	850
	10	150	250	350	450	550	650	1100
	12	150	250	400	550	650	800	1300
25x75	6	50	100	200	250	300	350	550
	8	100	150	250	300	350	450	700
	10	100	200	300	350	450	550	900
	12	150	250	350	450	550	650	1050
30x30	6	100	150	200	300	400	400	700
	8	100	200	300	350	450	550	900
	10	150	250	350	450	550	700	1100
	12	150	300	400	550	700	800	1350
30x45	6	100	150	200	250	300	350	550
	8	100	150	250	300	400	450	750
	10	100	200	300	400	500	550	950
	12	150	250	350	450	550	700	1100

# 3000

**EXTERIOR  
COATING  
APPLICATIONS**



<b>Product Description</b>	It is a ready adhesive mortar which is polymer modified, cement based, has high adhesive properties and used for adhering thermal and sound insulation boards.
<b>Product No</b>	301 - LY
<b>Places of usage</b>	It is used for adhering extruded polystyrene (XPS) or expanded polystyrene (EPS) sheets and rock wool thermal insulation sheets to interior and exterior surfaces of buildings which are part of horizontal, vertical and ceiling.
<b>Features and Advantages</b>	<ul style="list-style-type: none"> <li>• It is not affected by water.</li> <li>• It provides very good adhesion to surfaces of concrete, brick, gas concrete, plaster, prefabricated panel etc.</li> <li>• It can be used in interiors and exteriors.</li> <li>• It is suitable for vertical, horizontal and ceiling applications.</li> <li>• It is resistant to external effects and frost.</li> <li>• It is economical.</li> </ul>
<b>Technical Data</b>	<p><b>Color:</b> Gray</p> <p><b>Operating Temperature:</b> 5°C/35°C</p> <p><b>Flexural Strength:</b> <math>\geq 2</math> N/mm<sup>2</sup></p> <p><b>Compressive Strength:</b> <math>\geq 6</math> N/mm<sup>2</sup></p> <p><b>Adhesion to EPS:</b> <math>\geq 0.08</math> N/mm<sup>2</sup></p> <p><b>Adhesion to Concrete:</b> <math>\geq 0.5</math> N/mm<sup>2</sup></p> <p><b>Water Absorption:</b> 30 min &lt; 5 g 240 min &lt; 10 g</p> <p><b>Water Mixing Ratio:</b> 5.5-6 lt/ 25 kg bag</p> <p><b>Consumption:</b> 4-5 kg/m<sup>2</sup></p> <p><b>Shelf Life:</b> 12 months depending unopened packaging and dry environment.</p>
<b>Application</b>	<ul style="list-style-type: none"> <li>• The product should be mixed with electric mixers for 3-4 minutes, rested for 5 minutes and then mixed again and used.</li> <li>• It is recommended to apply adhesive which is an average width of 5 cm and in the form of frame to around the board and apply minimum 3 heaps to the inner part of the frame.</li> <li>• It is created required minimum %40 adhesion area by means of this type of adhesion.</li> </ul> <p>During the application, It should be paid attention that adhesive should not create a thermal bridge by smearing on the surface of board.</p>







<b>Product Description</b>	It is a cement-based ready mortar which used for plastering over thermal insulation boards and also has high strength, high adherence and polymer modified.
<b>Product No</b>	302 - LS
<b>Places of usage</b>	It is used as plaster on extruded polystyrene (XPS), expanded polystyrene (EPS) sheets and rock wool thermal insulation sheets in all structures.
<b>Features and Advantages</b>	<ul style="list-style-type: none"> <li>• It is not affected by water.</li> <li>• It is resistant to external effects and frost</li> <li>• It has a slightly elastic structure thanks to the polymers it contains.</li> <li>• It is suitable for vertical, horizontal and ceiling applications.</li> <li>• Adherence is quite good.</li> <li>• It is economical</li> </ul>
<b>Technical Data</b>	<p><b>Color:</b> Gray</p> <p><b>Operating Temperature:</b> 5°C/35°C</p> <p><b>Flexural Strength:</b> <math>\geq 2.0</math> N/mm<sup>2</sup></p> <p><b>Compressive Strength:</b> <math>\geq 6.0</math> N/mm<sup>2</sup></p> <p><b>Adhesion to EPS:</b> <math>\geq 0.08</math> N/mm<sup>2</sup></p> <p><b>Adhesion to Concrete:</b> <math>\geq 0.5</math> N/mm<sup>2</sup></p> <p><b>Water Spring Diffusion Coefficient:</b> <math>\geq 15</math></p> <p><b>Water Mixing Ratio:</b> 5.5-6 lt/ 25 kg bag</p> <p><b>Consumption:</b> 4-5 kg/m<sup>2</sup></p> <p><b>Shelf Life:</b> 12 months depending unopened packaging and dry environment.</p>
<b>Application</b>	The product should be mixed with electric mixers for 3-4 minutes, rested for 5 minutes and then mixed again and used. It is recommended to use a notched trowel so that the plaster thickness is equal in every region. The surface is smoothed by attaching the net on the plaster slowly. No need for a second coat of plaster. However, if it is desired to be applied, the first kit should be made without taking the plaster set.

# 302 - LS

## Thermal Insulation Board Plaster



100

200

300

400

500

600

700

800

900

1000

1100

1200



<b>Product Description</b>	It is a surface coating material that is cement-based, polymer modified, water repellent, ready to use and highly resistant to outdoor weather conditions, gives a decorative appearance thanks to its special filling size, is able to be painted over after drying and has a breathing feature due to its vapor permeability.
<b>Product No</b>	303 - DS
<b>Places of usage</b>	It is used as a finishing coating in sheathing systems or as a decorative coating on interior and exterior facades.
<b>Features and Advantages</b>	<ul style="list-style-type: none"> <li>• It is water repellent and is not affected by water.</li> <li>• Resistant to external effects and frost</li> <li>• Its adherence is excellent, it has high strength.</li> <li>• Thanks to the polymers it contains, it has a slightly elastic structure.</li> <li>• It is suitable for vertical, horizontal and ceiling applications.</li> <li>• It can be painted over after drying.</li> <li>• It has a breathing feature thanks to its vapour permeability.</li> </ul>
<b>Technical Data</b>	<p><b>Color</b> White</p> <p><b>Maximum Grain Size</b> 2 mm</p> <p><b>Texture</b> 2 mm grain texture, 2 mm line texture</p> <p><b>Capillary Water Absorption</b> W1</p> <p><b>Water Vapor Transfer</b> V1</p> <p><b>Grain Size</b> S4</p> <p><b>Crack Covering Feature</b> A0</p> <p><b>Carbon Dioxide Permeability</b> C0</p> <p><b>Mold Resistance</b> K2</p> <p><b>Water Mixing Ratio</b> 5.5-6 lt/ 25 kg bag</p> <p><b>Consumption</b> 2.5 kg/m<sup>2</sup></p> <p><b>Shelf Life</b> 12 months depending unopened packaging and dry environment.</p>
<b>Application</b>	The product should be mixed with electric mixers for 3-4 minutes, rested for 5 minutes and then mixed again and used. It should be applied to the wall with the help of a steel trowel. Excess material must be removed from the wall. Otherwise, both the product consumption will increase and the desired texture image will not be obtained. After stripping, the surface is patterned with circular movements by using a plastic trowel. You should not wait too long after the material has been pulled on the wall and peeled off. After the surface dries, the final coat is completed with exterior paint.





# 305 - MS

## Cement Based Machine Plaster

<b>Product Description</b>	It is a ready plaster which is cement- based and factory- mixed, has high breathability and can be applied by hand or machine.
<b>Product No</b>	305 - MS
<b>Places Of Usage</b>	<ul style="list-style-type: none"> <li>• It can be used in all buildings, interiors (including wet areas).</li> <li>• It is suitable for brick, aerated concrete, concrete, exposed concrete, pumice walls and ceilings.</li> <li>• It can be used as a base plaster for leveling and satin textured plasters, mineral and organic coatings and tile adhesives.</li> <li>• It is suitable for use on external facades, provided that it is covered with a top coat.</li> </ul>
<b>Features and Advantages</b>	<ul style="list-style-type: none"> <li>• The substrate should be clean, dry and dustless also it should not be frozen and salt/lime vomited.</li> <li>• There should be no parts on it.</li> <li>• If there are gaps or areas requiring repair on the application surface, they should be corrected before the application.</li> <li>• In extremely hot weather, dry and absorbent surfaces should be heated before application.</li> <li>• Exposed concrete, gas concrete and necessary surfaces should be prepared for plastering with pre-spreading or suitable primer.</li> <li>• Pre-spreading or primer should cover the application surface 100% and be completely dry.</li> <li>• It can be applied directly on the brick wall.</li> </ul>
<b>Technical Data</b>	<p><b>Color:</b> Gray</p> <p><b>Maximum Grain Size:</b> 1 mm</p> <p><b>Compressive Strength:</b> CS IV</p> <p><b>Capillary Water Absorption:</b> W0</p> <p><b>Water Mixing Ratio:</b> 6-6.5 lt. / bag</p> <p><b>Maximum Plaster Thickness:</b> 25mm for each stage (Maximum 50mm)</p> <p><b>Consumption:</b> 15 kg/m<sup>2</sup> (for 1cm thickness)</p> <p><b>Packaging:</b> 40 Kg Kraft bag</p> <p><b>Shelf Life:</b> 12 months with unopened packaging and dry environment.</p>
<b>Application</b>	<ul style="list-style-type: none"> <li>• Aktiwex Machine Plaster can be applied with suitable plastering machines.</li> <li>• The material applied with the plaster machine should be thrown on the entire surface in equal amounts.</li> <li>• After the application, the surface should be smoothed with a gauge.</li> <li>• When the surface hardens, defects on the surface are removed (scraped) with a suitable hand tool, and the plaster surface is slightly wetted with a sponge.</li> </ul>



100

200

300

400

500

600

700

800

900

1000

1100

1200



<b>Product Description</b>	It is a special mortar prepared for historical buildings that do not contain cement. It is a plaster mortar that provides breathability and has high water vapor permeability.
<b>Product No</b>	310 - HK
<b>Places of usage</b>	<ul style="list-style-type: none"> <li>• It is used:</li> <li>• In stone and brick wall laying works,</li> <li>• In the repair or strengthening of historical masonry structures,</li> <li>• In repair works of cracks in masonry domes and vaults,</li> <li>• In stone, brick and masonry works of existing historical buildings.</li> </ul> <p>As a binder in the preparation of Khorasan mortar to be used in joint production.</p>
<b>Features and Advantages</b>	<ul style="list-style-type: none"> <li>• It is easy to apply.</li> <li>• It does not contain cement.</li> <li>• Its adhesion resistance is high.</li> <li>• It is breathable and has high water vapor permeability.</li> <li>• It allows the production of mortar with different properties compatible with the historical texture.</li> <li>• It was burned with traditional methods at low temperatures.</li> </ul>
<b>Technical Data</b>	<p><b>Structure</b> Natural Hydraulic Lime  <b>Appearance:</b> Light gray and off-white  <b>Packaging</b> 25 kg Kraft Bag  <b>Flexural Strength</b> &gt; 1.0N/mm<sup>2</sup>  <b>Compressive Strength</b> &gt;3.5N/mm<sup>2</sup>  <b>Class</b> EN 459-1 NHL 3.5  <b>Water Mixing Ratio</b> is variable according to Khorasan mortar formula.  <b>Consumption</b> The Consumption is variable according to the Khorasan mortar formula.  <b>Mortar Density Approx.</b> 1.65 g/l  <b>Shelf Life</b> 12 months depending unopened packaging and dry environment.</p>
<b>Application</b>	<p><b>Surface Quality:</b> The surfaces must be clean, smooth, solid and must be removed by waste and all kinds of materials preventing adhesion such as dust, oil, dirt, rust, mold oil, detergent, etc. Weak parts on the surface should be removed before the application.</p> <p><b>Surface Preparation:</b> It should be paid attention that the surfaces to be repaired and plastered of historical masonry structures should be durable, dustless and clean. The surface must be cleaned up thoroughly from all kinds of materials to be weakened adherence like oil, grease, rust, etc. The wall surface to be applied must be dampened beforehand in order to improve the adhesion and setting time of the mortar. If there is a water flow on the surface, it should be closed with the help of a suitable plug and the water should be drained.</p> <p><b>Mixing:</b> The required amount of water is poured into a clean mixing bucket with the help of a measuring pot and 310 HK is slowly added to it and mixed with a 400-500 rpm mixer for about 4 minutes</p>



# 4000

**ANCHORAGE  
AND REPAIR**



<b>Product Description</b>	It is a surface repair mortar that is cement-based and polymer-reinforced.
<b>Product No</b>	401-TH
<b>Places Of Usage</b>	<ul style="list-style-type: none"> <li>It is used in restoring buildings and providing a smooth surface before painting, ceramic coating and insulation.</li> <li>It is used for filling slight cracks on surfaces such as exposed concrete, prefabricated concrete, gas concrete, briquette and brick.</li> </ul> <p>It is suitable for repairing surfaces of spilled, hollowed, cracked and ruptured up to 1- 10 mm and plaster repairs.</p>
<b>Features and Advantages</b>	<ul style="list-style-type: none"> <li>It has high adhesion strength.</li> <li>It creates a smooth and sold surface.</li> <li>It is resistant to freeze-thaw cycle.</li> <li>It can be applied up to 1-10mm thickness.</li> <li>It is easy to apply.</li> </ul>
<b>Technical Data</b>	<p><b>Color</b> Gray Powder</p> <p><b>Packaging</b> 25 kg kraft bag</p> <p><b>Application Temperature</b> (+5°C)-(+35°C)</p> <p><b>Water Mixing Ratio</b> 4-5 kg/25 kg bags</p> <p><b>Application Thickness</b> min. 3 mm- max 30 mm</p> <p><b>Flexural Strength</b> (EN 12808-3) &gt; 7.0 N/mm<sup>2</sup></p> <p><b>Adhesion Strength to Concrete</b> (EN 1542) 1.0 N/mm<sup>2</sup> (EN 12808-31 25 N/mm<sup>2</sup>)</p> <p><b>Confined Shrinkage</b> (EN 12617-4) &lt; 0.8 N/mm<sup>2</sup></p> <p><b>Capillary Water Absorption Value</b> (EN 13057): 0.5 kg/m h-0.5</p> <p><b>Shelf Life</b> 12 months depending unopened packaging and dry environment.</p>
<b>Application</b>	<p><b>Surface Quality:</b> The surfaces should be clean, smooth and solid also removed from wastes and all kinds of materials preventing adhesion like dust, oil, dirt, rust, mold oil, detergent, etc. Weak parts should be removed on the surface.</p> <p><b>Surface Preparation:</b> Cement slurry and weakened parts should be removed, there should be no materials such as oil, dirt and rust on the surface. Absorbent surfaces should be wetted primarily but there should be no water puddles.</p> <p><b>Mixing:</b> 4.0-5.0 L of clean, clear water taken from normal ambient temperature is poured into a clean pot that is free of any substance preventing adhesion. Aktiwex 401-TH, which is in a 25 kg bag in powder form, is poured into the pot filled with water. It is mixed with a low speed mixer until a homogeneous mixture is obtained without lumps. Mixing time should be at least 5 minutes. The mortar obtained at the end of the process should be rested for 3 minutes and mixed again for 2 minutes until it becomes homogeneous. After the material has reacted, water should not be added and mixed again.</p>





402-TH30

Thick Repair Mortar

<b>Product Description</b>	It is a surface repair mortar that is cement-based and polymer-reinforced.
<b>Product No</b>	402-TH30
<b>Places Of Usage</b>	<ul style="list-style-type: none"> <li>In filling the tension rod gaps (Rod holes/Te-rod holes) and core gaps in reinforced concrete structures.</li> <li>In the repair of concrete that comes out after the mold is taken during all kinds of construction,</li> <li>In surface repairs and floors which has light and medium traffic loads and special coatings.</li> <li>In all kinds of industrial reinforced concrete structures,</li> <li>In engineering structures such as subway, highway, dam.</li> <li>In the projects of reparation, repair and reinforced concrete reinforcement.</li> <li>In the repair of prefabricated elements.</li> <li>In the repairing surface defects in 10-40 mm thickness at one time.</li> </ul>
<b>Features and Advantages</b>	<ul style="list-style-type: none"> <li>It has high adhesion strength.</li> <li>It creates a smooth and solid surface.</li> <li>It is resistant to freeze-thaw cycle.</li> <li>It can be applied up to 1-10mm thickness.</li> <li>It is easy to apply.</li> </ul>
<b>Technical Data</b>	<p><b>Color:</b> Gray</p> <p><b>Packaging:</b> 25 Kg. Kraft Bag</p> <p><b>Application Temperature:</b> (+5°C)-(+35°C)</p> <p><b>Water Mixing Ratio:</b> 3.5-4.5 kg/25 kg bag</p> <p><b>Pot Life:</b> min. 30 min.</p> <p><b>Application Thickness:</b> 10-40 mm.</p> <p><b>Commissioning Time:</b> 24 Hours</p> <p><b>Flexural Strength:</b> (EN 12808-3) &gt; 7.0 N/mm<sup>2</sup></p> <p><b>Adhesion Strength to Concrete:</b> (EN 1542) &gt; 2.0 N/mm<sup>2</sup></p> <p><b>Bounded shrinkage:</b> (EN 12808-3) &gt; 60 N/mm</p> <p><b>Limited Shrinkage:</b> (EN 12617-4) &lt; 2 N/mm<sup>2</sup></p> <p><b>Capillary Water Absorption Value:</b> (EN 13057) &lt;0.5 kg/m<sup>2</sup> h</p> <p><b>Shelf Life:</b> 12 months depending unopened packaging and dry environment.</p>
<b>Application</b>	<p><b>Surface quality:</b>The surfaces should be clean, smooth and solid also removed from wastes and all kinds of materials preventing adhesion like dust, oil, dirt, rust, mold oil, detergent, etc. Weak parts should be removed on the surface.</p> <p><b>Surface preparation:</b> Cement slurry and weakened parts should be removed, and there should be no materials such as oil, dirt and rust on the surface. Absorbent surfaces should be wetted primarily but there should be no water puddles on the surface.</p> <p><b>Mixing:</b> 4.0-5.0 L of clean, clear water taken from normal ambient temperature is poured into a clean pot that is free of any substance preventing adhesion. Aktwex 402-TH30, which is in a 25 kg bag in powder form, is poured into the container filled with water. It is mixed with a low speed mixer until a homogeneous mixture is obtained without lumps. Mixing time should be at least 5 minutes. The mortar obtained at the end of the process should be rested for 3 minutes and mixed again for 2 minutes until it becomes homogeneous. After the material reacts, it should not be added water and mixed again.</p>



100

200

300

400

500

600

700

800

900

1000

1100

1200

# 405 - GH

## Flowable Non-Shrink Grout Mortar



<b>Product Description</b>	It is a non-shrinking, high-strength, self-compacting, cement-based, polymer modified, one-component, grout mortar.
<b>Product No</b>	405-GH
<b>Places Of Usage</b>	<ul style="list-style-type: none"> <li>• It is used: In fixing the steel columns to the foundation,</li> <li>• In the montage of prefabricated concrete structural elements</li> <li>• In fixing all kinds of industrial machines to the ground such as energy turbine, generator, compressor, pump etc. In concrete repair,</li> <li>• In internal and external conditions.</li> </ul>
<b>Features and Advantages</b>	<ul style="list-style-type: none"> <li>• It can be applied up to 150 mm thickness at one time.</li> <li>• It has high adhesion strength.</li> <li>• It has high pressure resistance.</li> <li>• It does not shrink or crack.</li> <li>• It is resistant to freezing and thawing cycles.</li> <li>• It is not affected by weather conditons.</li> <li>• It is waterproof.</li> <li>• It does not decompose and vomit water.</li> <li>• It is easy to apply and has a fluid and flowable consistency.</li> </ul>
<b>Technical Data</b>	<p><b>Color:</b> Gray Color Powder</p> <p><b>Grain size:</b> dmax 3 mm</p> <p><b>Packaging:</b> 25 Kg Kraft Bag</p> <p><b>Application Temperature:</b> (+5°C)-(+35°C)</p> <p><b>Water Mixing Ratio:</b> 3.5-4.5 l /25 kg bag</p> <p><b>Pot Life:</b> min 30 minutes</p> <p><b>Application Thickness:</b> 10-40 mm</p> <p><b>Commissioning Time:</b> 24 Hours</p> <p><b>Flexural Strength (28 g):</b> &gt; 7.0 N/mm<sup>2</sup> (EN 12808-3)</p> <p><b>Adhesion Strength to Concrete (28 g):</b> &gt; 2 N/mm<sup>2</sup> (EN 1542)</p> <p><b>Compressive Strength (28 g):</b> &gt; 60 N/mm<sup>2</sup> (EN 12808-3)</p> <p><b>Capillary Water Absorption Value:</b> &lt;0.5 kg/m<sup>2</sup> h<sup>0,5</sup> (EN 13057)</p> <p><b>Shelf Life:</b> 12 months depending unopened packaging and dry conditions.</p>
<b>Application</b>	<p><b>Surface quality:</b> The surfaces should be clean, smooth and solid also removed from wastes and all kinds of materials preventing adhesion like dust, oil, dirt, rust, mold oil, detergent, etc. If there are cracks or cavities on the floor or wall where the will be applied, they should be repaired with appropriate Aktiwex repair mortars. Aktiwex 405-GH should be applied after 3-4 days.</p> <p><b>Surface preparation:</b> Cement slurry and weakened parts should be removed, there should be no materials such as oil, dirt and rust on the surface. Absorbent surfaces should be wetted primarily but there should be no water puddles.</p> <p><b>Mixing:</b> 3-4 liters of clean, clear water getting from normal ambient temperature is poured into a clean pot that is free of any substance preventing adhesion. Aktiwex 405-GH, which is in a 25 kg bag in powder form, is mixed with a low speed mixer in a pot filled with water until a homogeneous mixture is obtained without lumps. Mixing time should be minimum 1 minute. The mortar prepared at the end of the process needs to be posited to its place. After the material has reacted, it should not be added water into mixture and not mixed again. The prepared mixture should be posited into its place within 2.5 minutes depending on the air temperature and the amount of water. Aktiwex 405-GH should be poured from one side to fill the bottom of the cavities that are surrounded and covered on all four sides. Thus, it prevents the formation of cavities by throwing the air out. The mortar can be pushed from one side with a long piece of iron during casting to accelerate the flow. Casting thickness should be between 10 and 40 mm as layer thickness at one time. If it will be used for filling cylindrical small diameter anchors, it is recommended to make a preliminary testing. In the applications thicker than 60 mm, it can be added 5-12 mm aggregate that is in the %30 rate of ingredients. Aggregate addition is done in two ways;</p> <ol style="list-style-type: none"> <li>1) The aggregate is added to the mortar. The process continues, until the mixture will be homogenous.</li> <li>2) Aggregate is poured on the floor to be applied and laid. Then Aktiwex 406- GH getting mixture casts on aggregate applied on the floor. The mortar will be casted by itself and surrounded whole aggregate. This situation also provides us getting high strength concrete.</li> </ol>



**405-GH**  
Flowable Non-Shrink Grout Mortar





# 406 - GH

## Fast Setting Non-shrinkage Flowable Grout Mortar

<b>Product Description</b>	It is a repair and filling mortar which is cement- based, single component, polymer- reinforced and does not decompose, sets quickly and gains early and high strength.
<b>Product No</b>	406 - GH
<b>Places Of Usage</b>	<ul style="list-style-type: none"> <li>• It is used: In places where needs to be opened quickly and wanted high strength.</li> <li>• In the assembly of manhole skeletons,</li> <li>• In the repair of runway and platform concretes</li> <li>• Repair of concrete floors exposed to vehicular and pedestrian traffic</li> <li>• In the assembly of curbs and paving stones.</li> </ul>
<b>Features and Advantages</b>	<ul style="list-style-type: none"> <li>• It sets fast and opens to traffi within 1 hour after applicaton.</li> <li>• It has high and early strength.</li> <li>• It has high pressure resistance.</li> <li>• It does not decompose and vomit.</li> <li>• It shows high fluency.</li> <li>• It is diluted with only water and easy to apply.</li> </ul>
<b>Technical Data</b>	<p><b>Color:</b> Gray powder</p> <p><b>Grain Size:</b> dmax 3mm</p> <p><b>Packaging:</b> 25 Kg Kraft Bag</p> <p><b>Application Temperature:</b> (+5°C)-(+35°C)</p> <p><b>Water Mixing Ratio:</b> 3-4 kg/25 kg bag</p> <p><b>Application Thickness:</b> min. 10mm - max 40mm</p> <p><b>Machining Time:</b> max. 2,5-4</p> <p><b>Commissioning Time:</b> 24 Hours</p> <p><b>Mortar Density:</b> 2.30 ± 0.1 kg/lt</p> <p><b>Compressive Strength:</b> ≥ 1 hour 16 N/mm<sup>2</sup></p> <p><b>24 hours:</b> ≥ 35 N/mm<sup>2</sup></p> <p><b>28 days:</b> ≥ 65 N/mm<sup>2</sup></p>
<b>Application</b>	<p><b>Surface quality:</b> The surfaces should be clean, smooth and solid also removed from wastes and all kinds of materials preventing adhesion like dust, oil, dirt, rust, mold oil, detergent, etc. If there are cracks or cavities on the floor or wall where will be applied, they should be repaired with appropriate Aktiwex repair mortars. Aktiwex 406-GH should be applied after 3-4 days.</p> <p><b>Surface prepatation:</b> Cement slurry and weakened parts should be removed, there should be no materials such as oil, dirt and rust on the surface. Absorbent surfaces should be wetted primarily but there should be no water puddles.</p> <p><b>Mixing:</b> 3-4 liters of clean, clear water getting from normal ambient temperature is poured into a clean pot that is free of any substance preventing adhesion. Aktiwex 406-GH, which is in a 25 kg bag in powder form, is mixed with a low speed mixer in a pot filled with water until a homogeneous mixture is obtained without lumps. Mixing time should be minimum 1 minute. The mortar prepared at the end of the process needs to be posited to its place. After the material has reacted, it should not be added water into mixture and not mixed again. The prepared mixture should be posited into its place within 2.5 minutes depending on the air temperature and the amount of water. Aktwex 406-GH should be poured from one side to fill the bottom of the cavities that are surrounded and covered on all four sides. Thus, it prevents the formation of cavities by throwing the air out. The mortar can be pushed from one side with a long piece of iron during casting to accelerate the flow. Casting thickness should be between 10 and 40 mm as layer thickness at one time. If it will be used for filling cylindrical small diameter anchors, it is recommended to make a preliminary testing. In the applications thicker than 60 mm, it can be added 5-12 mm aggregate that is in the %30 rate of ingredients. Aggregate addition is done in two ways;</p> <ol style="list-style-type: none"> <li>1) The aggregate is added to the mortar. The process continues, until the mixture will be homogenous.</li> <li>2) Aggregate is poured on the floor to be applied and laid. Then Aktiwex 406- GH getting mixture casts on aggregate applied on the floor. The mortar will be casted by itself and surrounded whole aggregate. This situation also provides us getting high strength concrete.</li> </ol>



# 5000

**WATER  
ISOLATION**



# 501 Dual Component Semi-Elastic Waterproofing

<b>Product Description</b>	It is a waterproofing material which is cement and synthetic resin based, two component and semi elastic.
<b>Product No</b>	501
<b>Places Of Usage</b>	<ul style="list-style-type: none"> <li>• It is used: As waterproofing on surfaces plastered with concrete and cement mortars interior and exteriors.</li> <li>• For curtain and wall insulation,</li> <li>• In areas that are not mobile to concrete structures,</li> <li>• For waterproofings which are wet areas,</li> <li>• In water tanks, swimming and ornamental pools</li> <li>• In wet areas such as bathrooms, WCs, balcones,</li> <li>• In engineering structures such as subway, tunnel, dam, highway</li> <li>• It is recommended to be used on drywall surfaces.</li> </ul>
<b>Features and Advantages</b>	<ul style="list-style-type: none"> <li>• It can be used interiors and exteriors. If it is applies in exterior, it is necessary a floor covering on it.</li> <li>• It is suitable for contact with potable water.</li> <li>• It does not shrink or crack.</li> <li>• It is suitable for horizontal and vertical applications.</li> <li>• Because it does not contain corrosive and toxic substances, it can be used in potable water reservoir.</li> </ul>
<b>Technical Data</b>	<p><b>Color:</b> Part A is gray, powder Part B is White, liquid Color of Mixture is Gray</p> <p><b>Packaging</b> 25 kg set, A: 20 kg. B: 5kg</p> <p><b>Waterproofing</b> <math>\geq 1.5</math> bar (positive)</p> <p><b>Initial Adhesion Strength</b> <math>\geq 0.5</math> N/mm (TS EN 14891)</p> <p><b>Adhesion Strength After Thermal Aging</b> <math>\geq 0.5</math> N/mm (TS EN 14891)</p> <p><b>Adhesion Strength After Contact with Lime Water</b> <math>\geq 0.5</math> N/mm (TS EN 14891)</p> <p><b>Adhesion Strength After Freeze-Thaw</b> <math>\geq 0.5</math> N/mm (TS EN 14891)</p> <p><b>Crack Bridging</b> <math>\geq 0.75</math> N/mm (TS EN 14891)</p> <p><b>Minimum Layer Thickness</b> 3 mm</p> <p><b>Quality Certificate</b> TS EN 1504-2, EN 14891</p> <p><b>Shelf Life</b> 12 months depending unopened packaging and dry environment.</p>
<b>Application</b>	<p><b>Surface Preparation:</b> The lower surface to be applied should be clean, dry, dustless and durable also should not be frozen and salt/lime vomited. There should be no loose parts on it. If there is any defect on the application surface, it should be repaired before the application.</p> <p><b>Application Conditions:</b> Ambient temperature recommended while working is between +5 C and +35 C. It should not be applied in high humidity or very hot weather and especially under direct sunlight.</p> <p><b>Application:</b> The powder component is added to the liquid part and it is mixed for 5 minutes with low-speed mixer until the mixture is homogeneous. After mixing, it is rested for 5 minutes and then mixed for 1 more minute to make the product ready for use. This mixture can be applied with a brush or trowel. The prepared mortar is applied to the floor in two times with the selected hand tool. It is required to wait minimum 6 hours between application layers. Layers should be applied perpendicular to each other. It will be sufficient a minimum 3 mm size application. Insulaton tape should be used at the corners of the application areas. After the application, you should wait for minimum 3 days before moving on to next other applications like tile or ceramic.</p>



100

200

300

400

500

600

700

800

900

1000

1100

1200



<b>Product Description</b>	It is a waterproofing material which is cement and synthetic based, two component and full elastic. It is applied on plasters which are concrete, curtain and cement based against leakage and surface water internally and externally.
<b>Product No</b>	502
<b>Places of usage</b>	<ul style="list-style-type: none"> <li>• It is used: In residences, shopping malls, hospitals,</li> <li>• In vertical and horizontal applications interiors and exteriors</li> <li>• In foundation insulation and retaining walls</li> <li>• In facilities such as spas and baths,</li> <li>• In water tanks, swimming and ornamental pools.</li> <li>• On the terraces (on condition that the top is protected)</li> <li>• In wet areas such as bathrooms, WCs and balcones.</li> </ul>
<b>Features and Advantages</b>	<p>It does not require to water.          It can be applied by hand or by spraying.          The working time is long.          It does not shrink or crack.          It can be applied on fresh screed and concrete surfaces due to its crack bridging feature.          It prevents carbonation in concrete.          Because it does not contain corrosive and toxic substances, it can be used in potable water reservoir.          It protects concrete against ice-melting salts such as calcium and sodium chloride, sea water and carbon dioxide gas.          It has high resistance to chlorine ions.</p>
<b>Technical Data</b>	<p><b>Color Part A grey, powder, Part B:</b> White, liquid  <b>Color of Mixture</b> Gray  <b>Packaging</b> 30 kg set, A: 20 kg. 10kg  <b>Waterproofing</b> <math>\geq 1.5</math> bar (positive)  <b>Initial Adhesion Strength</b> <math>\geq 0.5</math> N/mm<sup>2</sup> (TS EN 14891)  <b>Adhesion Strength After Heat Aging</b> <math>\geq 0.5</math> N/mm<sup>2</sup> (TS EN 14891)  <b>Adhesion Strength After Contact with Lime Water</b> <math>\geq 0.5</math> N/mm<sup>2</sup> (TS EN 14891)  <b>Adhesion Strength After Freeze-Thaw</b> <math>\geq 0.5</math> N/mm<sup>2</sup> (TS EN 14891)  <b>Crack Bridging</b> <math>\geq 0.75</math> N/mm<sup>2</sup> (-5°C)  <b>Minimum Layer Thickness</b> 3mm  <b>Quality Certificate</b> TS EN 1504-2, EN 14891  <b>Shelf Life</b> 12 months depending unopened packaging and dry environment.</p>
<b>Application</b>	<p><b>Surface Quality:</b> The surfaces should be clean, smooth and solid also removed from wastes and all kinds of materials preventing adhesion like dust, oil, dirt, rust, mold oil, detergent, etc. If there is segregaton in the concrete, damaged and loose parts should be discarded and weak pieces should be removed. . If there are cracks or cavities on the floor or wall where will be applied, they should be repaired with appropriate repair mortars. It should be ensure laying sloping concrete or screed in the direction of water flow. The correct control of the slope is done as follows. A gauge is held from the beginnig to the drain, and a scale is placed on it. As a result of the control, the application that there is no slope or there is a reverse slope should not be started. The slope should be adjusted into direction of water flow on concrete or screed. If necessary, additional screed or concrete should be poured.</p> <p><b>Surface Preparaton:</b> If the surface to be insulated is dry, it should be wetted and saturated with water and made ready for application. Sharp corners and edges should be chamfered with repair mortar. In wet areas and balconies that will be covered with ceramic tiles, chamfering tapes should be applied to all corners previously. 20 kg of powder mortar should be poured slowly onto 10 liters of liquid component and mixed thoroughly until there is no lumps. It is recommended to be mixed with a low speed mixer less than 500 rpm. The mortar should be rested for 5 minutes to mature, and it should be mixed again for 1-3 minutes before starting the application. The prepared mortar should be applied to the floor in 2 layers with a roller or brush. Depending on the temperature between time of layers, it should be waited for 5-6 hours. The layers should be applied perpendicular to each other. In total, it will be sufficient an 2-3 mm application thickness.</p>

502  
Two Component Semi-Elastic Waterproofing



# Cement Based Crystallized Waterproofing Mortar 504



## 504 Cement Based Crystallized Waterproofing Mortar

<b>Product Description</b>	It is a waterproofing material which is cement-based, one-component, applied to concrete mix or concrete surfaces, forms a crystalline structure, reacts with the water coming from the concrete.
<b>Product No</b>	504
<b>Places of usage</b>	<ul style="list-style-type: none"> <li>• It is used: In elevator holes</li> <li>• In water reservoir, swimming and ornamental pools,</li> <li>• In reinforced concrete pipes,</li> <li>• As a concrete additive that provides crystallized insulation during concrete pouring,</li> <li>• In manhole and infrastructure materials</li> <li>• In foundations and on the walls of basements,</li> <li>• In engineering structures such as subways, tunnels, dams, highways,</li> <li>• In negative and positive waterproofing of structures such as basement curtains.</li> </ul>
<b>Features and Advantages</b>	<ul style="list-style-type: none"> <li>• Thanks to its crystallization feature, it effectively prevents the passage of water from the surface.</li> <li>• It is resistant to positive and negative water pressure.</li> <li>• It is easy to use, mixed with plain water and used.</li> </ul>
<b>Technical Data</b>	<p><b>General Information</b>  <b>Appearance</b> Gray Powder  <b>Shelf Life</b> 12 months in dry conditions in unopened packaging  <b>Packaging</b> 20 kg kraft bag  <b>Application Information</b>  <b>Application Temperature</b> (+5°C)-(+35°C)  <b>Mixing Ratio</b> 6.0-7.0 lt water/20 kg powder  <b>Pot Life</b> 20 min  <b>Commissioning Time</b> 5 days  <b>Performance Information</b>  <b>Adhesion Strength to Concrete</b> <math>\geq 1.0 \text{ N/mm}^2</math>  <b>Waterproof</b> 7 bar (Negative and Positive side)  <b>Capillary Water Absorption Value</b> <math>&lt;0.1 \text{ kg/m}^2\text{h}^{0.5}</math></p> <p><b>Water Vapor Permeability Class</b> 1; <math>S_d &lt; 5</math> (<math>S_d</math>: Equivalent air layer thickness)  <b>Temperature Resistance</b> (-25°C)-(+80°C)  <b>See Dangerous Goods Safety Data Sheet</b>  <b>Response to Fire</b> A1</p>
<b>Application</b>	<p><b>Surface Quality:</b> The surfaces should be clean, smooth and solid also removed from wastes and all kinds of materials preventing adhesion like dust, oil, dirt, rust, mold oil, detergent, etc. If there is segregation in the concrete, damaged and loose parts should be discarded and weak pieces should be removed. If there are cracks or cavities on the floor or wall where will be applied, they should be repaired with appropriate repair mortars. 504 application should be started after 3-4 days. It should be ensure laying sloping concrete or screed in the direction of water flow. The correct control of the slope is done as follows. A gauge is held from the beginning to the drain, and a scale is placed on it. As a result of the control, the application that there is no slope or there is a reverse slope should not be started. The slope should be adjusted into direction of water flow on concrete or screed. If necessary, additional screed or concrete should be poured.</p> <p><b>Surface Preparation:</b> If the surface to be insulated is dry, it should be wetted and saturated with water and made ready for application. 6.0-7.0 lt of clean, clear water taken from normal ambient temperature is placed in a clean pot free of all kinds of substances preventing adhesion. 504, in powder form, in a 20 kg bag, is poured into the container filled with water. The product is mixed with a low-speed mixer until the mixture is homogeneous without lumps. Mixing time should be minimum 5 minutes. The mortar prepared at the end of the process should be rested for 3 minutes and mixed again for 2 minutes until it becomes homogeneous. 504 application is made in two ways; by brush and using the manual spreading method.</p>



100

200

300

400

500

600

700

800

900

1000

1100

1200



<b>Product Description</b>	It is a ready-to-use, shock set water plug. It is applied in powder form without need to be mixed with water.
<b>Product No</b>	505
<b>Places of usage</b>	<ul style="list-style-type: none"> <li>• It is used: In stopping active water leaks and drying up surface waters,</li> <li>• On all kinds of mineral-based surfaces,</li> <li>• In elevator holes,</li> <li>• In places where there are water leak such as water reservoir, swimming, ornamental pools</li> <li>• In foundations and on the walls of basements,</li> <li>• In engineering structures such as subway, tunnel, dam, highway.</li> </ul>
<b>Features and Advantages</b>	<ul style="list-style-type: none"> <li>• It can be applied in powder and mortar form.</li> <li>• It is easy to apply.</li> <li>• It becomes a waterproof plug by setting rapidly.</li> <li>• It is non-shrink and does not crack.</li> <li>• It does not corrode reinforced concrete reinforcement.</li> <li>• It adheres perfectly to the surface.</li> <li>• Its mechanical strength is very high.</li> <li>• All kinds of waterproofing materials can be applied on it.</li> </ul>
<b>Technical Data</b>	<p><b>General Information</b></p> <p><b>Appearance:</b> Gray powder</p> <p><b>Application Temperature:</b> (+5°C)-(+30 C)</p> <p><b>Packaging:</b> in 3 kg buckets</p> <p><b>Mixing Ratio:</b> 0.20 water/1 kg powder</p> <p><b>Shelf Life:</b> 6 Months</p> <p><b>Consumption approx:</b> 2 kg per 1 liter hole</p> <p><b>Final drying time:</b> 1 Minute</p>
<b>Application</b>	<p>The surfaces should be clean, smooth and solid also removed from wastes and all kinds of materials preventing adhesion like dust, oil, dirt, rust, mold oil, detergent, etc. If there is segregaton in the concrete, damaged and loose parts should be discarded and weak pieces should be removed. .The general usage area is the regions where there is water in the form of leakage, therefore the water on the surface would be sufficient. 505 is applied in powder form. You should use glove definitely during application. Take some powder on your palm and apply it to the active water leak by pressing at one blow. Keep in it this way until the water flow stops. 505 can also be applied by mixing with water, but in this case, it is necessary to act very quickly. It can be cleaned with water just after the application.</p>

# 505 Cement Based Fast Setting Water Proofing Plug





507 Elastomeric Resin Based Uv Resistant Liquid Membrane

<b>Product Description</b>	It is a ready to use waterproofing material which is elastomeric resin based, one component and super elastic.
<b>Product No</b>	507
<b>Places of usage</b>	<ul style="list-style-type: none"> <li>• It is used: On precast surfaces and facades,</li> <li>• In water reservoir, swimming and ornamental pools ,</li> <li>• On sloping terrace roofs,</li> <li>• In wet areas such as bathrooms, WCs, balcones,</li> <li>• On the external wall of buildings and in silos.</li> <li>• As elastic waterproofing material on reinforced concrete, galvanized sheet, polyurethane foam, zinc, PVC eaves, hidden stream surfaces.</li> </ul>
<b>Features and Advantages</b>	<ul style="list-style-type: none"> <li>• Due to its high flexibility at low temperatures, it has a high resistance to long-lasting cracking. It shows resistance to hail (important for terraces).</li> <li>• It provides very good adhesion even on difficult surfaces.</li> <li>• It provides very good protection against carbonation.</li> <li>• It is resistant to the passage of water hole. It is UV resistant.</li> <li>• It is applied directly with a brush or roller.</li> <li>• It can be painted over and coated with ceramics.</li> </ul>
<b>Technical Data</b>	<p><b>Color</b> White</p> <p><b>Application Temperature</b> (+5°C)-(+35°C)</p> <p><b>Commissioning Time</b> Minimum 3 days</p> <p><b>Time to Final Strength</b> 14 Days</p> <p><b>Waiting time between layers</b> 5 Hours</p> <p><b>Time to become Waterproof</b> 7 Days</p> <p><b>Consumption</b> 1.5 kg / m<sup>2</sup> (For 1mm dry film thickness)</p> <p><b>Adhesion Strength</b> (≥1,N/mm<sup>2</sup> 28 days) TS EN 1542</p> <p><b>Water Transfer Rate</b> &lt;0.1 kg/m<sup>2</sup>h0.5 (TS EN 1062-3)</p> <p><b>Water Vapor Transfer Rate</b> &lt;0.6 gr/(h.cm<sup>2</sup>) (TS EN ISO 7783-2)</p> <p><b>Crack Bridging</b> (21°C, 50% relative humidity) &gt;2.5 mm (TS EN 1062-7)</p> <p><b>Crack bridging</b> (-10°C, 50% relative humidity) &gt; 1.5mm (TS EN 1062-7)</p> <p><b>Pressurized Water Resistance</b> 5 Bar Positive</p> <p><b>Temperature Resistance of the Cured Product</b> (-25°C)-(+80°C)</p> <p><b>Elasticity</b> 500 – 700%</p> <p><b>Packaging</b> 20 Kg Plastic Bucket</p> <p><b>Shelf Life</b> 12 depending unopened package and in dry environment.</p>
<b>Application</b>	<p><b>Surface Preparation:</b> If there is any water hole or ponding on the surface, it should be removed. It should be applied tapes to all corners primarily in wet areas and balconies that will be covered with ceramic. The surfaces should be clean, smooth and solid also removed from wastes and all kinds of materials preventing adhesion like dust, oil, dirt, rust, mold oil, detergent, etc. If there is segregaton in the concrete, damaged and loose parts should be discarded and weak pieces should be removed. If there are cracks or cavities on the floor or wall where will be applied, they should be repaired with appropriate repair mortars. 507 application should be started after 3-4 days. It should be ensure laying sloping concrete or screed in the direction of water flow. The correct control of the slope is done as follows. A gauge is held from the beginnng to the drain, and a scale is placed on it. As a result of the control, the application that there is no slope or there is a reverse slope should not be started. The slope should be adjusted into direction of water flow on concrete or screed. If necessary, additional screed or concrete should be poured.</p>





<b>Product Description</b>	It is a waterproofing material which is water-based, one-component, bitumen based, high elastic, modified with a special polymer.
<b>Product No</b>	508
<b>Places of usage</b>	<ul style="list-style-type: none"> <li>It is used: In the foundation and basement curtain walls of the buildings as a moisture-proofing material,</li> <li>In dry and humid details like kitchen, bathroom etc. as a waterproofing material,</li> <li>In bituminous coating applications as primer,</li> <li>In applications of fiberglass and cross-stitch etc. as a lining material and binder</li> <li>In mortars and plasters composed of cement and/or fine sand as an impermeability and adherence enhancing additive,</li> <li>In preventing the construction formwork from flexing and deteriorating from water and as a mold release agent.</li> </ul>
<b>Features and Advantages</b>	<ul style="list-style-type: none"> <li>Since it does not contain solvents, it is environmentally friendly and can be used indoors easily.</li> <li>It can be applied to dry and humid surfaces.</li> <li>After drying, it forms a waterproofing and dampproofing solid layer on the applied surface. It is used as an insulating coating, as an impermeability and adherence enhancing additive in cement-based mortars, and as a primer under bitumen coatings by thinning with water.</li> </ul>
<b>Technical Data</b>	<p><b>Basis</b> Bitumen Structure</p> <p><b>Color</b> Dark Brown</p> <p><b>Density</b> 1 g/lt.</p> <p><b>Flashing Point</b> No Flash</p> <p><b>Application Temperature</b> (+5°C)-(+35°C)</p> <p><b>Water Resistance After Hardening</b> 7 bar (DIN 1048)</p> <p><b>Time to Wait for Filling with Soil</b> 3 Days</p> <p><b>Elongation Amount</b> &gt;100%</p> <p><b>Initial Dry</b> 1 hour (20 °C)</p> <p><b>Full Dry</b> 5-6 hours (20°C)</p> <p><b>Packaging</b> 18 kg plastic bucket</p> <p><b>Shelf Life</b> 12 months depending unopened packaging and in dry Conditions</p>
<b>Application</b>	<p><b>Surface Preparation:</b> The surface that will be applied should be cleansed from dust, dirt, rust and oil, loose parts should be scraped off. The spikes and corners should be rounded. If necessary, 508 can also be applied as a primer by thinning it with water at a maximum of 1:1 by weight.</p> <p><b>Method of Application:</b> Before the primer is applied to the surface to be insulated, it should be controlled smoothness, dryness and cleanliness of surface and a sufficient slope screed. 508 is applied to the surface by a brush or gun, 800 gr per square meter, and waited until it dries completely. It dries in approximately 4-5 hours depending on weather conditions. In two layer applications, second layer should not be applied before the first layer is completely dry. It is started membrane adhesive after the primer is completely dry.</p>







511 Bitumen Rubber And Solvent Based Liquid Membrane

<b>Product Description</b>	Aktiwex 511 is a ready to use bitumen solution which is modified bitumen and solvent based, one component, used against water and humid. After the evaporaton of its solvent, t adheres strongly to the appled surface and forms a water-resstant film layer.
<b>Product No</b>	511
<b>Places of usage</b>	<ul style="list-style-type: none"> <li>• It is used: It is used in preventing humidity in foundation, floors and walls of basements.</li> <li>• When applied to the flank front of the building, it prevents the formation of swelling, paint deterioration and mold on the inner surface of the wall by preventing water and humidity.</li> <li>• It is used in foundation and roof insulation by taking a primer before bituminous coatings.</li> <li>• When fibreglass is used together with bitumen cardboard, it create a waterproof layer.</li> <li>• It prevents corrosion when applied to the metal surface that touch in water in vehicles.</li> <li>• It prevents corrosion when used on metal surfaces that stay in underground or above ground</li> <li>• It is used on exterior surfaces that touch with the soil.</li> </ul>
<b>Features and Advantages</b>	<ul style="list-style-type: none"> <li>• It has strong adhesion to the applied surface (concrete, plaster, metal, etc.).</li> <li>• It starts to dry very soon after the application and forms a layer.</li> </ul>
<b>Technical Data</b>	<p><b>Structure</b> Solvent Bitumen Based</p> <p><b>Color</b> Black, Thick Liquid</p> <p><b>Density</b> 0.92-0.98 g/lt</p> <p><b>Application Temperature</b> (+5°C-(+35°C)</p> <p><b>Solids Ratio</b> 65-70%</p> <p><b>Time to Wait for Soil Filling</b> 3 Days</p> <p><b>Elongation Amount</b> &gt;100%</p> <p><b>First Dry</b> 1 hour (20 °C)</p> <p><b>Full Dry</b> 5-6 hours (20°C)</p> <p><b>Elongation at Break</b> 1000%</p> <p><b>Elasticity Recycling</b> 90%</p> <p><b>Packaging</b> 18 Kg. Tin</p> <p><b>Shelf Life</b> 12 months depending unopened packaging and in dry environment.</p>
<b>Application</b>	<b>Surface Preparation:</b> The surface that will be applied should be cleansed from dust, dirt, rust and oil, loose parts should be scraped off. The spikes and corners should be rounded. It is applied by a brush on the surfaces by mixing with the addition of gas or thinner when necessary, as well as directly applied. If the application will be performed in indoors, it should be paid attention to ensure adequate ventilation. Drying time is minimum 24 hours, depending on climatic conditions.



100

200

300

400

500

600

700

800

900

1000

1100

1200



<b>Product Description</b>	It is a water-based liquid bitumen emulsion which is used as a primer in waterproofing.
<b>Product No</b>	512
<b>Places of usage</b>	<p>It is used: In the foundation and basement curtains of the buildings, as a humid-proofing material, In dry or damp details like kitchen, bathroom etc. as a waterproofing material          In all bituminous coating applications as a primer          In applications like fibreglass, canvas, etc. as a primer and binder          In mortars and plasters composed of cement and/or fine sand as an impermeability and adherence enhancing additive,          In preventing the construction formwork from flexing and deteriorating from water and as a mold release agent.</p>
<b>Features and Advantages</b>	<p>Since it does not contain solvents, it is environmentally friendly and can be used indoors easily. It can be applied to dry and humid surfaces.          After drying, it forms a waterproofing and dampproofing solid layer on the applied surface.          It is used as an primer under bitumen coating and as an additives which enhance impermeability and adherence in cement-based mortars and insulating coatings.          impermeability and adherence enhancing additive in cement-based mortars, and as a primer under bitumen coatings by thinning with water.</p>
<b>Technical Data</b>	<p><b>Color</b> Brown  <b>pH</b> &gt;9.5  <b>Density</b> 1.01 (+0.03) g/ml  <b>Initial Drying Time</b> 4-5 hours (20°C)  <b>Full Drying Time</b> 72 hours (20°C)  <b>Time to Wait for Soil Filling</b> 3 days  <b>Packaging</b> 18 kg tin  <b>Shelf Life</b> 12 months depending unopened packaging and in dry environment.</p>
<b>Application</b>	<p><b>Surface Preparation:</b> The surface that will be applied should be cleansed from dust, dirt, rust and oil, loose parts should be scraped off. The spikes and corners should be rounded.  <b>Method of Application:</b> Before the primer is applied to the surface to be insulated, it should be controlled smoothness, dryness and cleanliness of surface and a sufficient slope screed. 512 is applied to the surface by a brush or gun, 400 gr per square meter, and waited until it dries completely. In necessary situations, it can be used by thinning with water in the rate of %20. It dries in approximately 4-5 hours depending on weather conditions. In two layer applications, second layer should not be applied before the first layer is completely dry. It is started membrane adhesive after the primer is completely dry.</p>



# 6000



## INDUSTRIAL SURFACES

# 601 Levelling Screed



100	<b>Product Description</b>	It is a surface smoothing screed which is cement-based and contain chemical additives that enable the formation of a non-porous structure and easy spreading.
200	<b>Product No</b>	601
300	<b>Places of usage</b>	<ul style="list-style-type: none"><li>• It is used to obtain a smooth surface under PVC, linoleum, laminate-laminated parquet, wood, carpet, ceramic coating.</li><li>• It is used for smoothing concrete and screed surfaces.</li><li>• It provides smoothing and leveling of existing pavement, mosaic, natural stone surfaces.</li><li>• It creates a surface that is resistant to abrasion and dust emission on floors such as storage room and entrepot which are exposed to heavy pedestrian and load traffic.</li></ul>
400	<b>Features and Advantages</b>	<ul style="list-style-type: none"><li>• It spreads on by itself and comes to the balance.</li><li>• It has high adhesion strength.</li><li>• It is suitable for application in 2.5-10 mm thickness without shrinkage, cracking and deterioration.</li><li>• It has high bending and compression strength.</li><li>• It is resistant to abrasion.</li></ul>
500	<b>Application</b>	<p><b>Surface Preparation:</b> The surface that will be applied should be cleansed from dust, dirt, rust and oil, loose parts should be scraped off. In sub-surfaces that are not strong enough to self supporting such as cracked plasters, weak surfaces, mortar and cement residues should be scraped from the surface. Floors, pits and gaps requiring repair should be filled with structural repair mortar products and leveled minimum 1-2 hours before the screed application. Mineral-based subfloors with normal and uniform absorbency should be primed with 512 minimum 24 hours in advance. In order to prevent the risk of cracking due to expansion during drying, a polystyrene foam board should be placed to separate the screed from the wall or other building elements. In order to prevent elevation difference in large areas and to make a smooth application, application elevations should be determined by making a maximum 3x3m tiles. Application thickness should be determined by taking into account the smoothness ,and porosity on the floor. It is important to use a gauge in the applications to be made in large areas or areas with high surface defects.</p> <p>Application Instructions: 25 kg 601 should be poured slowly into 5.5-6.0 lt of water and mixed until a homogeneous mixture is prepared. Mixing should be made with a low speed mixer. Any additives not specified in the application instructions should not be added. The prepared mortar should be rested for 2-3 minutes to mature. Prepared 601 in fluid consistency should be poured into the surface. The thickness of the self-levelling mortar should be smoothed with a steel trowel. During the application, a spiked roller should be used so that there are no air bubbles in the product and it is easier to spread.</p>



601  
Levelling Screed



## 603 Corundum Aggregate Powder Surface Hardener

<b>Product Description</b>	It is a surface hardening material which is ready to use, cement-based, contains corundum and specifically selected aggregates and also is applied on fresh concrete to be exposed to heavy burdens and by sprinkling in powder form.
<b>Product No</b>	603
<b>Places of usage</b>	<ul style="list-style-type: none"> <li>• It is used:</li> <li>• In interiors and exteriors,</li> <li>• On industrial plant floors,</li> <li>• In hangars and workshops,</li> <li>• In garages and parking lots,</li> <li>• In storages,</li> <li>• In loading and discharging areas,</li> <li>• In areas subject to tire-wheeled vehicle traffic,</li> <li>• In the aircraft hangar,</li> <li>• On helicopter pads.</li> </ul>
<b>Features and Advantages</b>	<ul style="list-style-type: none"> <li>• It can be easily applied on fresh floor concrete.</li> <li>• It provides the opportunity to obtain a smooth and homogeneous surface.</li> <li>• It prevents abrasion due to mechanical burden.</li> <li>• It provides resistance against impacts.</li> <li>• It delays surface dust emission.</li> </ul>
<b>Technical Data</b>	<p><b>General Information</b>  <b>Appearance/Color</b> Red, Green, Gray / Natural Powder  <b>Shelf Life</b> 12 months in dry conditions in unopened packaging.</p> <p><b>Packaging</b> 25 kg kraft bag  <b>Consumption Amount</b> 4-8 kg/m<sup>2</sup>  <b>Application Ground Temperature</b> (+5°C) - (35°C)  <b>Compressive Strength</b> 80 N/mm<sup>2</sup>  <b>Abrasion Resistance</b> ≤ 2 cm<sup>3</sup>/ 50 m<sup>2</sup></p>
<b>Application</b>	<p><b>Surface Preparation;</b> The quality of the supplied concrete should not vary, and the entire surface should have a homogeneous strength. The concrete floor must be fully compacted, prepared in mim. C225 (350 dose, 25N/mm<sup>2</sup>) class, with a minimum water/cement ratio. The thickness of the applied concrete should be minimum 15 cm. Air-entrained concretes are not suitable for surface hardener application. The surface of the fresh concrete to be applied must be smoothed with a wooden trowel.</p> <p><b>Application Instructions:</b> It should be waited until able to walk on the load-bearing concrete. The footprint depth created when walking on it should be 0.5-1.5 cm. Depending on the conditions, it should be expected that the water that emerge later will be removed from the surface. In mechanical applications, once 4-8 kg/m<sup>2</sup> 603 should be spread on the surface with an automatic spreader, then it should be spreaded to the surface smoothly. In manual applications, it is recommended to sprinkle in two stages. (2/3 of the total amount in the first stage; 1/3 in the second stage) A careful and homogeneous distribution should be ensured without creating ripples on the surface. The sprinkle application should not be made to the areas further from 2 meters. It should be expected that the sprinkled material will absorb the water on the concrete and be humid. It can be observed that it reaches sufficient humidity level with color change. Glazing should be made with a low-speed mechanical trowel (helicopter). Water should never be added to the surface on which the surface hardener has been applied. Final corrections can be made by hand or with a helicopter trowel. Looseness or grouting on the surface indicates that the concrete is still fresh. As soon as the concrete hardening level becomes appropriate, the pre-correction should be made with a low-speed metal blade trowel with a minimum angle, and the final smoothing should be worked at high speed.</p>



100

200

300

400

500

600

700

800

900

1000

1100

1200



<b>Product Description</b>	It is a surface hardening material which is cement-based, quartz aggregate, ready to use, applied by sprinkling in powder form on fresh concrete surfaces that will be exposed to medium and heavy burden.
<b>Product No</b>	604
<b>Places of usage</b>	<ul style="list-style-type: none"> <li>• It is used:</li> <li>• In interiors and exteriors,</li> <li>• On industrial plant floors,</li> <li>• In hangars and workshops,</li> <li>• In garages and parking lots,</li> <li>• In storages,</li> <li>• In loading and discharging areas,</li> <li>• In areas subject to tire-wheeled vehicle traffic,</li> </ul>
<b>Features and Advantages</b>	<ul style="list-style-type: none"> <li>• It can be easily applied on fresh floor concrete.</li> <li>• It provides the opportunity to obtain a smooth and homogeneous surface.</li> <li>• It prevents abrasion due to mechanical burden.</li> <li>• It provides resistance against impacts.</li> <li>• It delays surface dust emission.</li> </ul>
<b>Technical Data</b>	<p><b>General Information</b></p> <p><b>Appearance/Color</b> Red Green/Grey</p> <p><b>Consumption</b> 4-8 kg/m<sup>2</sup></p> <p><b>Compressive Strength</b> &gt;60 N/mm<sup>2</sup></p> <p><b>Flexural Strength</b> &gt;8 N/mm</p> <p><b>Abrasion Resistance</b> (Taber method) &lt; 4.0 gr (H22, 1000 gr 1000 cycles)</p> <p><b>Application Ground Temperature</b> (+5°C)-(+35°C)</p> <p><b>Shelf Life</b> 12 months in dry conditions in unopened packaging.</p>

**Application**

**Surface Preparation;** The quality of the supplied concrete should not vary, and the entire surface should have a homogeneous strength. The concrete floor must be fully compacted, prepared in mim. C25 (350 dose, 25N/mm<sup>2</sup>) class, with a minimum water/cement ratio. The thickness of the applied concrete should be minimum 15 cm. Air-entrained concretes are not suitable for surface hardener application. The surface of the fresh concrete to be applied must be smoothed with a wooden trowel.

**Application Instructions:** It should be waited until able to walk on the load-bearing concrete. The footprint depth created when walking on it should be 0.5-1.5 cm. Depending on the conditions, it should be expected that the water that emerge later will be removed from the surface. In mechanical applications, once 5 kg/m<sup>2</sup> 604 should be spread on the surface with an automatic spreader, then it should be spreaded to the surface smoothly. In manual applications, it is recommended to sprinkle in two stages. (3 kg/m<sup>2</sup> in the first stage; 2 kg/m<sup>2</sup> in the second stage) A careful and homogeneous distribution should be ensured without creating ripples on the surface. The sprinkle application should not be made to the areas further from 2 meters. It should be expected that the sprinkled material will absorb the water on the concrete and be humid. It can be observed that it reaches sufficient humidity level with color change. Glazing should be made with a low-speed mechanical trowel (helicopter). Water should never be added to the surface on which the surface hardener has been applied. Final corrections can be made by hand or with a helicopter trowel. Looseness or grouting on the surface indicates that the concrete is still fresh. As soon as the concrete hardening level becomes appropriate, the pre-correction should be made with a low-speed metal blade trowel with a minimum angle, and the final smoothing should be worked at high speed. After the application; the tools and equipments used in application should be cleaned with water. It should be used protective mask, eyeglasses and gloves and worn suitable working clothes during the application.

604 Quartz Aggregate Powder Surface Hardener





<b>Product Description</b>	It is an one component floor primer which is ready to use, styrene/acrylate-based, alkali- resistant, colorless in order to use before absorbent floors and levelling screed applications.
<b>Product No</b>	606
<b>Places of usage</b>	On especially highly absorbent floors of buildings, floor leveling screed and similar cement-based coatings, it is used: In increasing adherence, In accelerating the spread, In preventing cracks caused by rapid water absorption of the application surface, In preventing air bubbles.
<b>Features and Advantages</b>	It provides high adherence. It sets quickly. It provides high alkali resistance. It is easy to apply.
<b>Technical Data</b>	<b>General Information</b> <b>Appearance/Color:</b> White <b>Shelf Life</b> 12 months in dry conditions in unopened packaging <b>Packaging</b> 5 and 20 liter plastic drums <b>Surface Temperature</b> should not be below (+5 °C) <b>Ambient Temperature</b> (+5°C)-(+30°C)
<b>Application</b>	<b>Surface Preparation:</b> The surface must be clean, dry, smooth and solid. Plaster, paint, adhesive, oil and cement residues on the surface should be cleaned. The surface must be free from dust. <b>Application Instructions:</b> 606 is a ready-to-use primer. It should be applied as a single layer with a roller by mixing it without thinning before the application. Priming should be made homogeneously on the entire surface. The white color of the primer will become transparent as it sets. Depending on the ambient and surface temperature and the condition of the surface, the leveling screed application should be started approximately 1 hour after the 606 application. After the application all tools that is used should be washed with water before drying.



606

Ready to Use, One Component Floor Primer

100

200

300

400

500

600

700

800

900

1000

1100

1200

# 608 Acrylic Resin Based Curing Material



<b>Product Description</b>	Acrylic resin-based curing material that prevents rapid evaporation of the mixing water and minimizes the risk of crack formation on the surface by forming a water vapor-proof protective film layer on the pores on the surface after concrete, straw and cement-based surface hardener applications.
<b>Product No</b>	608
<b>Places of usage</b>	It is used as a material to prevent the speed drying of freshly applied concrete, screed and surface hardeners.
<b>Features and Advantages</b>	<ul style="list-style-type: none"><li>• Preventing fast drying and cracking by clogging the pores on the fresh concrete, surface hardening and screed surface,</li><li>• Preventing dusting by increasing the abrasion resistance of the surface.</li></ul>
<b>Technical Data</b>	<b>General Information</b> <b>Appearance/Color</b> White <b>Shelf Life</b> 12 months in dry conditions in unopened packaging <b>Packaging</b> 20 liter plastic drum <b>Approx.</b> 100-150 g/m <sup>2</sup> <b>Ambient Temperature</b> (+5°C)-(+30°C)
<b>Application</b>	The 608 should be shaken well before use. 608 should be applied to the surfaces in equal amounts, as a thin film layer, by spraying method.



608 Acrylic Resin Based Curing Material



# 7000

**CONCRETE  
AND MORTAR  
ADDITIVES**



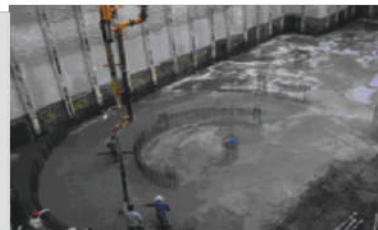
<b>Product Description</b>	It is a water-proofing mortar additive that improves the strength values and application properties of plaster, screed, concrete and similar mortar produced at construction sites.
<b>Product No</b>	701
<b>Places of usage</b>	It is used in all kinds of construction foundations, basements, retaining walls, culverts, tunnels, pools, concrete, plaster and screeds of terraces and similar structures.
<b>Features and Advantages</b>	<ul style="list-style-type: none"> <li>• Ready to use and practical.</li> <li>• Increasing the waterproofing of the mortar,</li> <li>• Improving the performance strengths of the mortar.</li> </ul>
<b>Technical Data</b>	<p><b>General Information</b></p> <p><b>Appearance/Color</b> White</p> <p><b>Shelf Life</b> 12 months in its unopened package and in a dry place</p> <p><b>Packaging</b> 5 and 20 liter plastic drums</p> <p><b>Ambient Temperature</b> (+5 °C)-(+30°C)</p> <p><b>Usage Amount:</b> It is used around 10-20% of the cement ratio to be used.</p>
<b>Application</b>	701 should be shaken before use. 701 should be added to clean mixing water and mixed. Depending on the application area and the wetness of the sand, the ratio of 701 to water should be increased in special cases. The prepared 701 mixture should be added to the dry mixture. Lime should not be added to the prepared mortar.





# 702 Mortar and Concrete Additive that Provides Frost Resistance

<b>Product Description</b>	A special chloride-free additive used in the production of mortar and concrete against the risk of cold and frost.
<b>Product No</b>	702
<b>Places of usage</b>	In situations that the fewer frost effect continues throughout the day, In situations that there is a danger of frost within the first 24 hours after the application, In situations which has probability of sudden temperature decrease In times that needs to be taken mould early.
<b>Features and Advantages</b>	Increasing the resistance of mortar and concrete against frost, To provide exceeding quickly the limit required for the resistance of the mortar and concrete against frost. It does not contain chloride, not harm the reinforcement.
<b>Technical Data</b>	<p><b>General Information</b></p> <p><b>Appearance/Color</b> Transparent</p> <p><b>Shelf Life</b> 12 months in its unopened package and in a dry place</p> <p><b>Packaging</b> 30 kg plastic drums, 180 kg barrels</p> <p><b>Consumption</b> 2% of average cement weight</p> <p><b>Ambient Temperature</b> (+5C)-(+35°C)</p> <p><b>Usage Amount</b> 100 kg binder (cement, clinker, etc.) 1-2.5 kg is used</p>
<b>Application</b>	702 should be shaken well before use. 702 should be added to clean mixing water and mixed. The prepared 702 mixture should be added at the end of the mixing process.



100

200

300

400

500

600

700

800

900

1000

1100

1200



<b>Product Description</b>	It enhances the properties of concrete such as durability, easily processable and waterproofing against the risk of freezy and thaw in the production of all kinds of ready concrete and prefabricated concrete in regions with cold climate conditions. It does not contain chlorine.
<b>Product No</b>	703
<b>Places of usage</b>	It increases the properties of concrete such as durability, easy workability and water impermeability against the risk of freezing and thawing in the production of all kinds of ready-mixed concrete prefabricated concrete, in regions with cold climate conditions. Does not contain chlorine.
<b>Features and Advantages</b>	<ul style="list-style-type: none"> <li>• It provides early high strength</li> <li>• By accelerating the set, it shortens the beginning and ending times.</li> <li>• It reduces the friction between cement and aggregate.</li> <li>• It provides the opportunity to obtain a gap-free and smooth surface.</li> <li>• It provides being economical in concrete unit cost by saving energy.</li> </ul>
<b>Technical Data</b>	<p><b>Technical specifications</b></p> <p><b>Appearance / Color</b> Brown colored liquid</p> <p><b>Shelf Life</b> 12 months in its unopened package and in a dry place</p> <p><b>Packaging</b> 30 kg plastic drum</p> <p><b>Consumption</b> 0.6% of cement weight (0.6 liters per 100 kg cement)</p> <p><b>Ambient Temperature</b> (+5°C) should not be below</p> <p><b>Liquid Density</b> 1.32 kg./lt.</p> <p><b>pH</b> 6-7 (20°C)</p> <p><b>Amount of Chlorine and Nitrate</b> &lt; 0.1%</p> <p><b>Freezing Point</b> &lt; 0°C</p>
<b>Application</b>	Concrete additives should not be added directly to the dry mix. The steps written in the application method should be followed. The rate of use should be determined by laboratory tests to be carried out in advance, depending on the desired concrete class and properties. It can be used together with mineral additives (clinker, micro, silica, etc.) in cases where a high rate of binding material is required. The amount of additive in the mixture is calculated by multiplying the total amount of all binders by the additive mixing ratio. In the case of more than the recommended amount of admixture is used, the setting of the concrete may be delayed. In this case, the concrete should be kept humid during the molding process by performing the necessary curing processes.





<b>Product Description</b>	It is a high-quality and ready-to-use wooden mold release agent that contains a special emulsifier mixture, enables separating the molds from concrete easily, provides a smooth and stainless surface.
<b>Product No</b>	704
<b>Places of usage</b>	It is suitable for using: In conventional wood formwork systems, On all kinds of mold surfaces with high absorbency.
<b>Features and Advantages</b>	<p>It is ready to use and applied directly without dilution.</p> <p>It is basic and easy to apply</p> <p>It allows the mold to be separated from the concrete easily and quickly.</p> <p>By reducing the air entrance on the concrete surface, it provides a stainless and smooth surface on the concrete.</p> <p>In re-use of molds, it minimizes the need for cleaning, significantly reduces mold cost and labor.</p> <p>It has high liquidity and does not cause congestion in the sprayer.</p> <p>It increases the efficiency and life time of the mold.</p> <p>It does not include solvent.</p>
<b>Technical Data</b>	<p><b>Appearance / Color</b> Brown colored liquid</p> <p><b>Shelf Life</b> 12 months in its unopened package and in dry place</p> <p><b>Packaging</b> 30 lt. plastic drums and 210 lt. barrels</p> <p><b>Consumption</b> %0.6 of cement weight (0.6 lt for 100 kg cement)</p> <p><b>Ambient Temperature</b> It is not recommended to be applied under (+5C) temperature and under heavy rain.</p> <p><b>Liquid Density</b> 1,32 kg/ lt</p> <p><b>pH</b> 6-7 (20°C)</p> <p><b>Klor ve Nitrat Miktarı</b> &lt; % 0,1</p> <p><b>Application Temperature</b> &gt; 5°C</p> <p><b>Freezing Point</b> &lt;0 °C</p>
<b>Application</b>	Before using 704, the mold surfaces to be applied must be carefully cleaned. The mold surface should be cleaned from concrete, wood, iron pieces, snow and ice. 704 is a ready-to-use material. Also anything (water, solvent) should not be added to it. The product must be shaken before use. In order to get the best results, 704 should be applied homogeneously in a thin layer (one layer) on the mold by spraying or by roller. The material should not be allowed to accumulate on the surface and should be spread over the entire surface. In spraying applications, the deal amount of use should be reached by experimenting.

# 704 Wood Mold Release



100

200

300

400

500

600

700

800

900

1000

1100

1200

# 8000

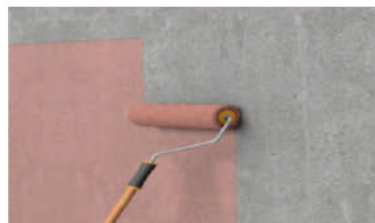
**PAINT  
AND  
PRIMER**



# 801

## Exposed Concrete Primer

<b>Product Description</b>	It is an exposed concrete surface primer material which is solvent-free, polymer dispersion based and filled.
<b>Product No</b>	801
<b>Places of usage</b>	<ul style="list-style-type: none"> <li>• It is used: In interior and exterior,</li> <li>• On horizontal and vertical surfaces,</li> <li>• On ceilings,</li> <li>• In enhancing the adhesion strength in the application of gypsum-lime and cement-based plasters on the exposed concrete surface.</li> </ul>
<b>Features and Advantages</b>	<ul style="list-style-type: none"> <li>• It increases the adhesion strength by creating a rough surface for plaster applications on smooth exposed concrete floors.</li> <li>• It prevents rapid water loss of cement and gypsum based plasters and enables them to be processed more easily for a longer period of time.</li> <li>• It is ready to use, and can be applied with a brush or roller.</li> <li>• It does not contain solvent.</li> <li>• It is scentless.</li> </ul>
<b>Technical Data</b>	<p><b>Technical specifications</b></p> <p><b>Appearance/Color</b> Orange</p> <p><b>Shelf Life</b> 12 months in dry conditions in unopened packaging</p> <p><b>Packaging</b> 12 kg and 25 kg plastic buckets</p> <p><b>Density Approx.</b> 1.55 gr/cm<sup>3</sup></p> <p><b>Application Temperature</b> (+5°C)-(+30°C)</p> <p><b>Mixing Ratio</b> 1-2 lt water/ 12 kg pail 2-4 lt water/25 kg pail</p> <p><b>Drying Time</b> 45 – 60 Minutes</p> <p><b>Waiting Time After Application</b> Min. 24 hours</p> <p><b>Consumption</b> 150-250 gr/m<sup>2</sup> (For one coat)</p> <p><b>It complies with</b> TS 13744 standard.</p>
<b>Application</b>	It should be paid attention that the surface is cured and durable. The application surface should be purified from residues such as dust, dirt, mold oil, clinker, paint that prevent adhesion. Sub-surfaces that are not strong enough to support themselves, such as cracked plasters, weak surfaces, mortar and cement residues should be scraped from the surface. If necessary, the surface should be smoothed and cracks should be repaired. 801 is applied with a brush or roller after adding 4.0-6.0 lt of water into a 12 kg bucket and mixing well. It is recommended to mix with a low speed mixer less than 500 rpm. The resulting mixture is applied to the surface with a roller brush. During the application, the material in the pot should be mixed at intervals. Drying time is 45-60 minutes. It should not be applied on before it dries.



100

200

300

400

500

600

700

800

900

1000

1100

1200



<b>Product Description</b>	It is a rammed lining material which is solvent-free, polymer dispersion based and is suitable for ceramic or ceramic applications.
<b>Product No</b>	802
<b>Places of usage</b>	It is used as a primer on smooth and bright surfaces such as ceramics, exposed concrete, marble, clinker, plywood, and absorbent surfaces such as gypsoplast, concrete, plaster, screed, wood.
<b>Features and Advantages</b>	It increases the adhesion strength by creating roughness for adhering ceramics to smooth and bright floors. By providing to attach dusty parts of surfaces to the surface, it enables that the ceramic adhesive can attach to the surface better. It is ready to use and can be applied with a brush or roller. It is solvent free and scentless.
<b>Technical Data</b>	<b>Technical specifications</b> <b>Appearance/Color</b> Light Blue Liquid <b>Shelf Life</b> 12 months in dry conditions in unopened packaging. <b>Packaging</b> 1 kg, 3 kg and 5 kg plastic buckets <b>Density Approx.</b> 1.17 gr/cm <sup>3</sup> <b>Application Temperature</b> (+5°C)-(+35°C) <b>Mixing Ratio</b> 0.1 lt/1 kg pail -0.3 lt/3 kg pail - 0.5 lt/5 kg pail <b>Drying Time</b> 45-60 minutes <b>Waiting Time After Application</b> Min. 48 hours <b>Consumption</b> 100 gr/m <sup>2</sup> (for one coat) <b>Conforms to</b> TS 13744 standard
<b>Application</b>	It should be paid attention that the surface should be cured and durable. The application surface should be purified from residues such as dust, dirt, mold oil, clinker, paint that prevent adhesion. Sub-surfaces that are not strong enough to support themselves, such as cracked plasters, weak surfaces, mortar and cement residues should be scraped from the surface. If necessary, the surface should be smoothed and cracks should be repaired. After 802 is thoroughly mixed, it is applied by a brush or roller. Any additives, should not be added. It should be applied as 2 layers on very absorbent surfaces such as plaster, screed and concrete.



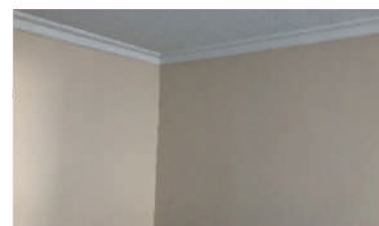
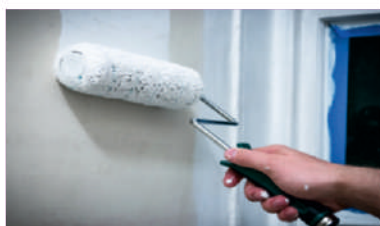




803

Water Based, Silicone, Interior and Exterior Primer

<b>Product Description</b>	It is an interior and exterior primer which is solvent- free, polymer dispersion based, and filled.
<b>Product No</b>	803
<b>Places of usage</b>	It is used as a paint primer on all kinds of porous, highly absorbent surfaces such as concrete, plaster, gypsum board, putty and old water-based painted surfaces.
<b>Features and Advantages</b>	<ul style="list-style-type: none"> <li>• By reducing the absorbency of the surface, it decreases the consumption applied on it.</li> <li>• It penetrates deeply into the subsurfaces.</li> <li>• It is covering.</li> <li>• It provides better adhesion of the paint to the surface.</li> <li>• It is silicone.</li> <li>• Its colour is white.</li> </ul>
<b>Technical Data</b>	<p><b>Technical specifications</b></p> <p><b>Appearance/Color</b> White</p> <p><b>Packaging</b> 3,5 kg and 20 kg plastic buckets</p> <p><b>Structure Based</b> on Acrylic Resin</p> <p><b>Thinner</b> Water</p> <p><b>Density Approx.</b> 1.74 g/l</p> <p><b>Application Temperature</b> (+5°C) - (+35°C)</p> <p><b>Drying Time:</b> 6 hours to dry for the application of the topcoat. Lower temperature and higher relative humidity prolong the drying time.</p> <p><b>Consumption</b> An average of 0,16 kg/m<sup>2</sup> in one coat, depending on the roughness and absorbency of the surface.</p> <p><b>Application Tools</b> Roller</p> <p><b>Performance Information</b></p> <p><b>Service Temperature</b> (-30°C) - (+80°C)</p> <p><b>Brightness</b> (85°) &lt;10</p> <p><b>Solid Content:</b> (KMM) 68.5%</p> <p><b>Conforms to</b> TS 13744 standard</p>
<b>Application</b>	<p>The surfaces to be applied must be cleaned of dust, dirt and oil reducing adherence, and must be completely cleaned of old and swollen paint layers and made dry, sound and clean. Before applying on new mineral surfaces, at least 28 days should be waited for the surface to cure. All water-related insulation measures of the building must be taken. Old synthetic-based surfaces should be thoroughly sanded and sandpaper dust should be removed from the surface. Old surfaces should be rinsed with water and soda solution and allowed to dry. After diluting 803 with clean water at the rate of maximum 10% by volume, it should be applied to the surface in one coat with a brush, roller or spray system. During the application and for the following 24 hours, the temperature of the environment and the surface to be applied should be minimum +5°C and the surface should not receive precipitation. It should not be applied in very hot weather, under direct sun, in weather with strong wind, fog, high relative humidity or precipitation expectation. Extremely hot surfaces should be moistened before application. The material should not be used on horizontal surfaces exposed to rain.</p>



100

200

300

400

500

600

700

800

900

1000

1100

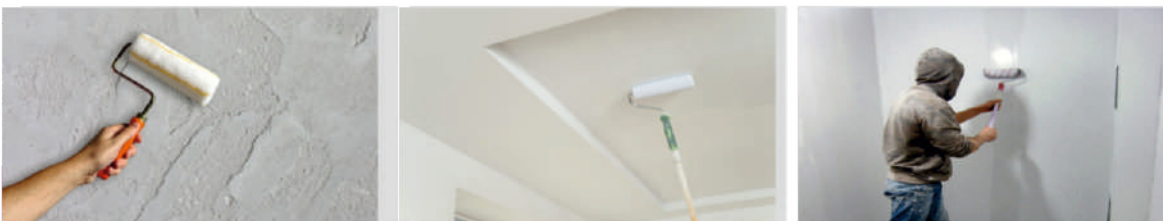
1200

# 804 Water Based Transparent Primer



<b>Product Description</b>	It is a transparent primer that is acrylic emulsion-based, ready to use and prepares plaster for painting.
<b>Product No</b>	804
<b>Places of usage</b>	It is used as an emulsion-based paint primer on porous, highly absorbent and/or weak mineral surfaces such as satin plaster, gypsum board, putty.
<b>Features and Advantages</b>	<ul style="list-style-type: none"> <li>• It makes plastered surfaces ready for painting.</li> <li>• It is ready to use.</li> <li>• By reducing the absorbency of the plastered surface, it reduces the consumption of the paint to be applied on it.</li> <li>• It provides better adhesion of the paint to the surface.</li> <li>• It prevents the paint from drying early and cracking in hot weather.</li> <li>• With its unfilled structure, it strengthens the surface thanks to its high penetration ability.</li> </ul>
<b>Technical Data</b>	<p><b>Appearance/Color</b> Transparent</p> <p><b>Packaging</b> 3 and 20 lt Plastic Cans</p> <p><b>Structure:</b> Acrylic Emulsion Based</p> <p><b>Application Temperature</b> (+5°C) (-35°C)</p> <p><b>Drying Time</b> 6 hours to dry for paint application</p> <p><b>Lower</b> temperature and higher relative humidity extend the drying time.</p> <p><b>Consumption</b> 0.090 kg/m<sup>3</sup> in one coat, depending on the roughness and absorbency of the surface.</p> <p><b>Application Tools</b> Brush, Roller, Spray Gun</p> <p><b>Conforms to</b> TS 13744 standard</p>
<b>Application</b>	<p>The surfaces to be applied needs to be cleaned of dust, dirt and oil reducing adherence, and should be completely cleaned of old and swelled paint layers and made dry, durable and clean. Before applying on new mineral surfaces, at least 28 days should be waited for the surface to cure. It should be taken all insulation precautions of the building regarding water. Old synthetc-based surfaces should be thoroughly sanded and sandpaper dust should be removed from the surface. If necessary, the cracks on the surface should be filled and the surface should be smoothed. Before application, 804 should be mixed thoroughly. After mixing 804, it should be applied to the surface in one layer without thinning with a brush, roller or spray system. In order to ensure that 804 is spread homogeneously on the surface, the product should be applied with a roller by dispersing it, not at a single point on the surface. Paint application should be started at least 6 hours after 804 application. During the application and for the following 24 hours, the temperature of the environment and the application surface should be minimum +5°C and the surface should not receive precipitaton. The material should not be used on horizontal surfaces exposed to rain.</p>

## 804 Water Based Transparent Primer



100

200

300

400

500

600

700

800

900

1000

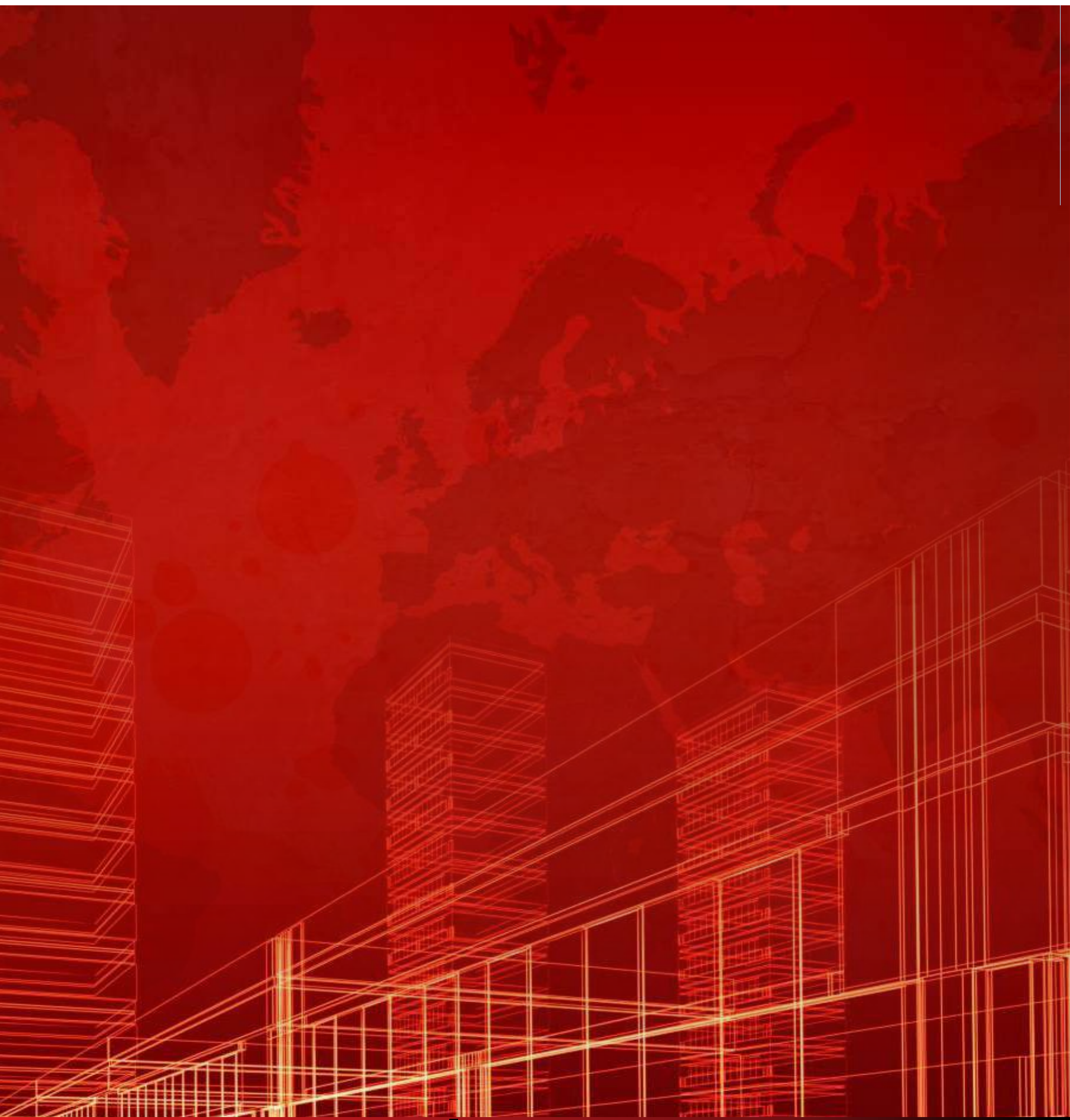
1100

1200



<b>Product Description</b>	It is a matt ceiling paint which is acrylic emulsion based.
<b>Product No</b>	805
<b>Places of usage</b>	It is applied on interior facades, on properly prepared mineral new ceilings such as black plaster, concrete, cement board and old painted ceilings.
<b>Features and Advantages</b>	<ul style="list-style-type: none"> <li>It has superior covering power.</li> <li>It has excellent water vapor permeability.</li> <li>It gives a matt and smooth texture.</li> <li>It does not swell and does not crack</li> <li>Since it does not contain solvents and is diluted with water, it does not smell and does not harm human and environmental health.</li> </ul>
<b>Technical Data</b>	<p><b>Technical specifications</b></p> <p><b>Appearance/Color</b> White, it should be colored by color master.</p> <p><b>Packaging</b> 3,5 kg. 10 kg. 17.5 kg and 20 kg plastic buckets</p> <p><b>Packages</b> of 3,5 kg are shrinked in 2 units.</p> <p><b>Structure</b> Acrylic Emulsion Based</p> <p><b>Thinner</b> Water</p> <p><b>Density</b> Approx. 1.80 g/cm<sup>3</sup></p> <p><b>Application Temperature</b> (+5°C) (-35°C)</p> <p><b>Drying Time</b> 2 hours to dry for 2 coats, 24 hours to fully dry, Lower temperature and higher relative humidity extend the drying time.</p> <p><b>Consumption</b> 0.160 kg/m<sup>3</sup> in one coat, depending on the roughness and absorbency of the surface.</p> <p><b>Application Tools</b> Brush, roller, spray gun</p> <p><b>Performance Information</b></p> <p><b>Water Vapor</b> Permeability Approximately 0.010 SD(m) (TS EN ISO 7783-2)</p> <p><b>Brightness</b> (60°) Approx. 3 ISO 2813</p> <p><b>Service Temperature</b> (+30°C) – (80°C)</p>
<b>Application</b>	The surfaces to be applied needs to be cleaned of dust, dirt and oil reducing adherence, and should be completely cleaned of old and swelled paint layers and made dry, durable and clean. Before applying on new mineral surfaces, at least 28 days should be waited for the surface to cure. If necessary, the cracks on the surface should be filled with paste and the defects should be removed. If a smooth final appearance is desired, the entire surface should be smoothed with paste. It is recommended to be primed old solvent based or water based painted surfaces to be change the color old painted and very dirty surfaces, absorbent surfaces to be newly painted, with satin plaster primer. 805 should be mixed thoroughly before application. 805 is diluted with 30% clean water by volume and applied in two layers with a brush, roller and spray system. It should be waited minimum 2 hours between layers. Application tools should be washed with water immediately after using. During the application and for the following 24 hours, the temperature of the environment and the surface to be applied should be minimum +5°C.





**KERİMOĞULLARI MERMER  
SAN. VE TİC. A.Ş.**

Kurtuluş Mah. Bilecik Cad. No:139 Yenişehir / BURSA  
Tel: 0 224 772 33 51  
[www.aktiwex.com.tr](http://www.aktiwex.com.tr) [info@aktiwex.com.tr](mailto:info@aktiwex.com.tr)